

DIGIUM R-SERIES PRODUCTS

Digium's Redundancy Series (aka "R-Series") products, are a family of inexpensive, versatile appliances that enable physical-layer failover of analog (POTS) and digital (T1, E1, PRI or BRI) telephony connections to Asterisk-based communications systems. The R-Series devices allows Asterisk administrators to create high-availability solutions that insure uninterrupted business communications, even in the event of a catastrophic hardware or software failure.

R-Series appliances include all the tools necessary to build a fully redundant active/passive communications solution. If the primary server experiences a hardware or software fault, all telecom services will automatically switch to the backup server. The R-Series integrates with software to mirror file systems, manages the transition of a shared IP address and monitors system health between the primary and backup.

The R-Series family consists of 2 models, the analog R800 appliance and the digital R850 appliance. Each model supports eight (8) public switched telephone (PSTN) circuits. The appliances delivers PSTN circuits to each Asterisk server via Digium's telephony interface cards. Management and failover communications between the Asterisk Servers and the R-Series appliance is done using a set of USB connections, which also provide power — saving energy costs over the lifespan of the appliance.

Business communications are critical. Trust Digium, the creators of Asterisk, to provide the most reliable and robust solution for mission critical Asterisk solutions.

Ordering Details

1R800F: 8 Port Analog R-Series Failover Appliance

1R850F: 8 Port Digital T1/E1/PRI/BRI Failover Appliance

Mechanical

Size: 1.72 x 5.84 x 15 inches.

Weight:

R800: 3lb 5.4oz

R850: 3lb 12.6oz

Style: 1U Rack mount and wall mount (brackets included)

Environment

Temperature: 0 to 50° C

(32 to 122° F) operation

-20 to 70° C (4 to 158° F) storage

Humidity: 10 to 90% non-condensing

Supported Hardware

Analog Boards: TE410, TE800, TE2400, Hybrid Cards

Digital Boards: All 1, 2, 4 and 8 port TE Series, B410P and Hybrid Cards

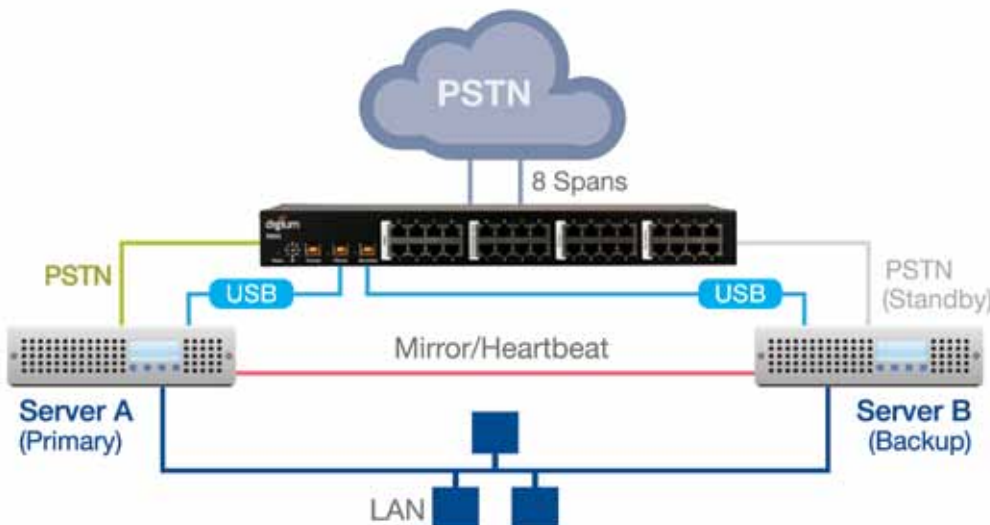
Warranty

1-year parts and labor

Digium Exceptional Satisfaction Program



Digium R850 (top photo) and R800



Under normal conditions the backup server (B) is synchronized with and monitors the health of the primary server (A) via the local area network. If the backup detects a hardware or software failure on the primary it will notify the R-Series to to redirect the PSTN connections and take over as the active system. Within seconds operations will resume with all services intact.