

# ClearOne®

**CHAT® 150 | CHATAttach™ 150**

Group Speakerphone

Quick Start Guide



# Table of Contents

<b>CONFIGURING THE CHAT 150</b> .....	<b>1</b>
<b>CHAT 150 FEATURES</b> .....	<b>2</b>
<b>CONNECTING YOUR CHAT 150</b> .....	<b>3</b>
CONNECTING THE CHAT 150 TO A PC .....	3
<b>CONFIGURING AND TESTING YOUR CHAT 150</b> .....	<b>4</b>
CHAT 150 AUDIO CONFIGURATION.....	4
CHATATTACH™: CONNECTING TWO CHAT DEVICES .....	5
<b>USING THE CHAT 150</b> .....	<b>6</b>
CHAT 150 LED INDICATORS.....	6
VOLUME & MUTE BUTTONS .....	6
<b>CHAT 150 SPECIFICATIONS AND REQUIREMENTS</b> .....	<b>7</b>
SYSTEM REQUIREMENTS .....	7
CONNECTIONS .....	7
AUDIO.....	7
SPEAKER .....	7
MICROPHONE(S) .....	7
POWER.....	7
CONTROLS .....	7
ENVIRONMENTAL.....	7
PROCESSING .....	7
LINE INPUT/OUTPUT VIA VC BoB .....	7
MECHANICAL .....	7
COMPLIANCE .....	7
MODEL NUMBERS .....	7

### CONFIGURING THE CHAT 150

The CHAT 150 can be used right out of the box and there's no software to download or install if it is to be used only with a PC.

If the CHAT 150 is to be used with any other device or if the CHAT 150 firmware requires updates, follow the instructions in the CHAT 150 User's Manual to setup and configure the CHAT 150.

The latest version of the software and CHAT 150 User's Manual can be found on the ClearOne Website at:

**<http://www.clearone.com/support/downloads.php?content=main>**

Scroll down the page to the CHAT 50/150 section and click the relevant links.

Follow the instructions in the manual to install and configure the CHAT 150 device.

## CHAT 150 FEATURES

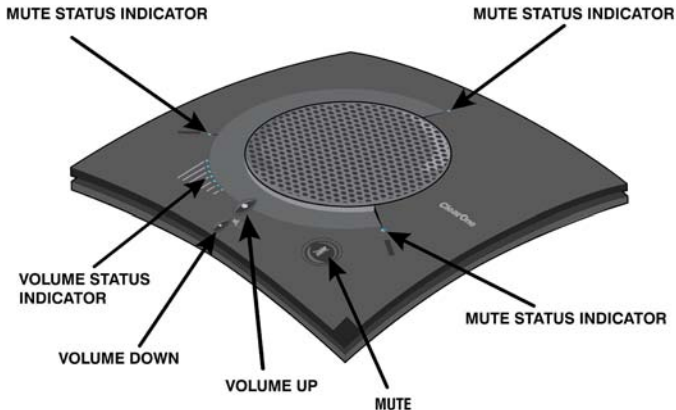


Figure 1 - CHAT 150 Features

**Important!** CHAT devices are designed to work on flat, stable surfaces with no obstructions. For best results, do not hold or move the device while in use.

### CONNECTING YOUR CHAT 150

The following describes how to connect your CHAT 150 to a PC.

The CHAT 150 can also be connected to a number of other devices. For information on connecting the CHAT 150 to other devices, refer to the CHAT 150 User's Manual.

#### CONNECTING THE CHAT 150 TO A PC

Use the included USB 2.0 cable to connect the CHAT 150 to your PC (Figure 1.0).

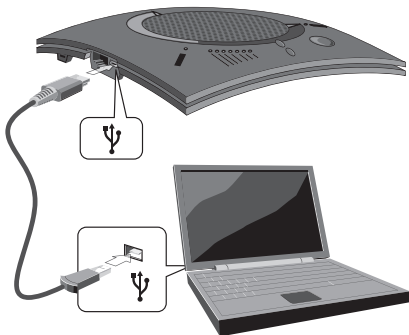


Figure 2 - Connecting to a PC

### CONFIGURING AND TESTING YOUR CHAT 150

Consult the CHAT 150 User's Manual for all device and software configuration procedures as needed.

#### CHAT 150 Audio CONFIGURATION

To ensure optimal sound quality, the CHAT 150 **MUST** be tuned properly prior to use or after the device has been moved. The CHAT 150's audio settings must also be customized for the specific application it is to be used with and for the specific device it is to be connected to.

The CHAT 150 derives its audio settings from the Windows sound settings if it is attached to a PC or through the 3rd party application's settings (Skype, Yahoo, etc.) Refer to the tuning procedures in the **Optimizing Sound Quality** section in the **CHAT 150 User's Manual** or consult the specific 3rd party application's tuning adjustments.

For further details on configuring various devices for the CHAT 150 audio settings, refer to the **CHAT 150 User's Manual**.

### CHATATTACH™: CONNECTING TWO CHAT DEVICES

The CHATAttach accessory allows two CHAT devices to be connected together for use in larger conference settings.

Certain restrictions and requirements must be met in order to use the CHATAttach accessory. For a complete list and detailed instructions, consult the CHATAttach or the CHAT 150 User's Manual.

1. Attach the specially keyed CHATAttach cable to both CHAT 150 devices (Figure 2.0).
2. Plug the power supply into the power source.
3. Connect the female/male ends of the power cable together.
4. Place the CHAT 150 units at least 5' apart.

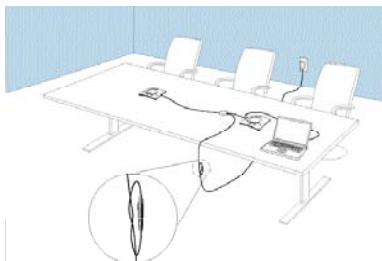


Figure 3 - CHATAttach Connection

## CHAT 150 Group Speakerphone

### USING THE CHAT 150

#### CHAT 150 LED INDICATORS

The three microphone LED indicators illuminate blue when the CHAT 150 microphones are active. The indicators illuminate red when the microphones are muted.

The seven volume LED indicators illuminate blue to indicate the current volume setting—more lights indicate higher volume.

#### VOLUME & MUTE BUTTONS

Use the **Volume Up/Down** buttons (indicated by a large dot and a small dot) to adjust the volume level of the CHAT 150. Holding down either button will change the volume rapidly.

Use the **Mute** button to mute the CHAT 150's microphone until the **Mute** button is pressed again. If you are using the CHAT 150 with a PC, you can also use the Speaker Volume Control in Windows, as well as the CHAT software to adjust the volume and mute the microphone.

### SPECIFICATIONS AND REQUIREMENTS

#### System Requirements

Microsoft Windows XP, Vista or 7

#### Connections

##### USB:

2.0 Compatible, Type: Mini-B Female

**Keyed:** RJ-45 (8-conductor)

##### Line Input/Output via VC BoB:

Frequency Response:

20 Hz - 20 kHz +/- 1 dB

Maximum Input Level: +6 dBu

Input Impedance: 10 k $\Omega$

Output Impedance: 50  $\Omega$

#### Audio

##### Speaker

Bandwidth: 190 Hz – 20 kHz

Maximum Output Level:

85 dB SPL @ 1 foot (0.30 meter)

##### Microphone(s)

Bandwidth: 50Hz – 7.75 kHz

#### Power

##### USB:

5 VDC @ 500mA Maximum

##### External:

100 - 240 VAC Input, 9 VDC @ 560 mA

Output, Tip: Power, Ring: Ground

#### Controls

Volume Up

Volume Down

Microphone Mute

#### Environmental

Operating Temperature:

41 - 104° F (5 - 40° C)

#### Processing

Full Duplex

Distributed Echo Cancellation  
(D. E. C.)®

Noise Cancellation (NC)

Automatic Level Control (ALC)

Line Echo Cancellation (LEC) -  
Selectable

First Mic Priority

#### Mechanical

Dimensions (W x D x H):

7.4" x 7.4" x 1.8"

(18.8 cm x 18.8 cm x 4.6 cm)

Weight: 1.17 lbs (0.53 kg)

#### Compliance

RoHS, REACH

FCC Class A Part 15

ICES-003, CE Listed, UL Listed

#### Model Numbers

910-156-200 CHAT 150 USB

910-156-200-00 CHATAttach 150

910-156-222 CHAT 150 Avaya

910-156-220 CHAT 150 Cisco

910-156-230 CHAT 150 VC



**Caution:** Read the Safety Information in the instruction manual.

U.S. PATENTS: D539,274; D556,189; D531,999.

OTHER PATENTS PENDING.

© 2010 ClearOne Communications, Inc. All rights reserved.

Information in this document is subject to change without notice. 800-156-202 Revision 2.2 October 2010