

# SmartNode 4554™ **ISDN BRI PSTN Gateway**

## Quick Start Guide



**Important** — This is a Class A device and is intended for use in a light industrial environment. It is not intended nor approved for use in an industrial or residential environment.



WARNING

- The SmartNode 4554 contains no user serviceable parts. The equipment shall be returned to Patton Electronics for repairs, or repaired by qualified service personnel.
- **Mains Voltage:** Do not open the case the power cord is attached. The external power adaptor shall be a listed limited power source that incorporates a disconnect device and shall be positioned within easy reach of the operator. The mains outlet shall be within 10 feet (3 meters) of the device, shall be easily accessible, and protected by a circuit breaker.
- The SmartNode 4554 is not shipped with power cables. For AC powered units, ensure that the power cable used meets all applicable standards for the country in which it is to be installed, and that it is connected to a wall outlet which has earth ground.
- Hazardous network voltages are present in WAN ports regardless of whether power to the SmartNode 4554 is ON or OFF. To avoid electric shock, use caution when near WAN ports. when detaching the cables, detach the end away from the SmartNode 4554 first.
- Do not work on the system or connect or disconnect cables during periods of lightning activity.

---

## 1.0 Power up the SmartNode

---

1. Connect the SN4554 to a power source using the included power supply and cable.
2. When the *Power* LED stops blinking and remains lit, the SN4554 is ready to configure.

---

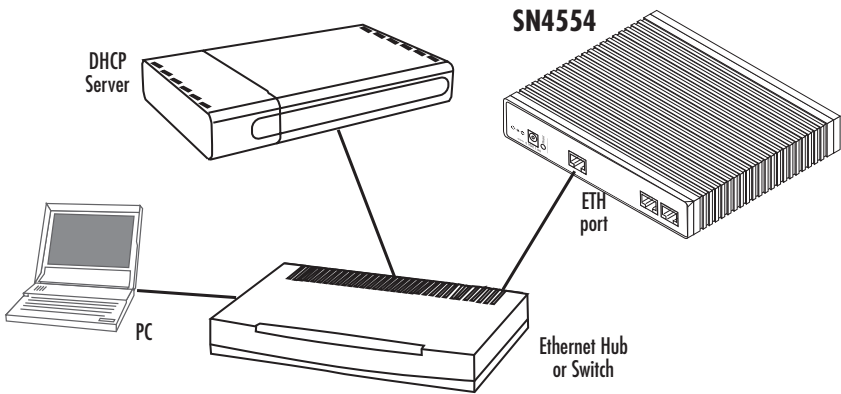
## 2.0 Connect the SmartNode to your local network

---



The interconnecting cables shall be acceptable for external use and shall be rated for the proper application with respect to voltage, current, anticipated temperature, flammability, and mechanical serviceability.

You must connect the SN4554 to an IP network that provides a DHCP server. Using the included black Ethernet cable, connect the SN4554 RJ-45 Ethernet WAN port, labeled *ETH* (see figure 1), to an Ethernet hub or switch on the same network as your PC. The Ethernet WAN interface is configured as a DHCP client.



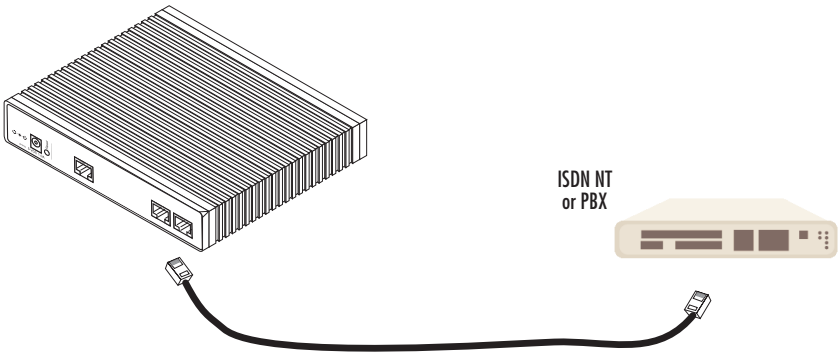
**Figure 1.** Connecting the SN4554 to the network via a hub or switch

## 3.0 Connect the SmartNode to an ISDN NT



The interconnecting cables shall be acceptable for external use and shall be rated for the proper application with respect to voltage, current, anticipated temperature, flammability, and mechanical serviceability.

1. Using a straight-through cable, terminated with RJ-45 connectors, connect the BRI port of your SN4554 to a PBX or ISDN NT, as shown below:



**RJ-45, male**

3

4

5

6

**RJ-45, male**

3

4

5

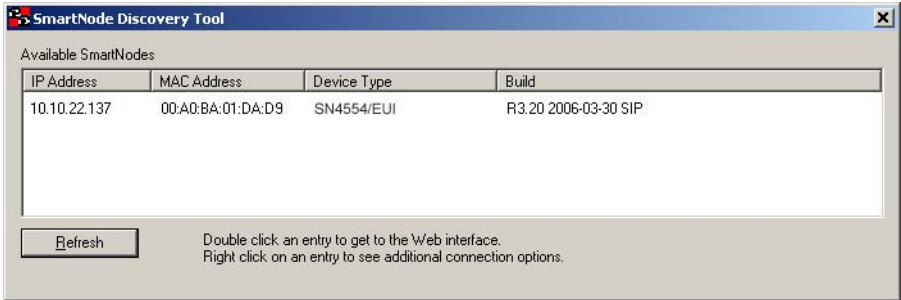
6

---

## 4.0 Start the SmartNode Discovery Tool

---

1. Insert the CD included with your SN4554 into the CD drive on your PC.
2. Copy the file named *SNDiscovery.exe* from the CD to your PC.



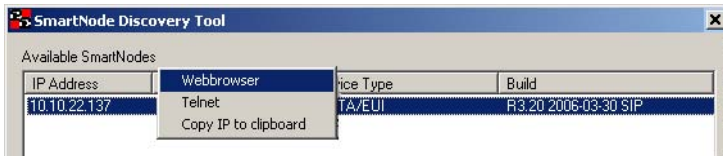
3. At your PC, double-click the *SNDiscovery.exe* file name to activate the tool. The SmartNode Discovery Tool window will display the IP Address, MAC Address, Device Type (model number) and Build (software release) of your SN4554.  
If your SN4554 does not appear:
  - Make sure the SN4554 and your PC are on the same routed subnet
  - Make sure any firewall programs on your PC are disabled

---

## 5.0 Access the Web Browser (GUI) Interface

---

1. In the SmartNode Discovery Tool window, select the line that displays the IP address of your SN4554.



**Figure 2.** SmartNode Discovery Tool window

2. Right-click the selected line, and select *Webbrowser*. The Login window will display.



Figure 3. Login window

3. Enter the username *administrator*. Do not enter a password. Instead simply click OK. Your web browser will display the SN4554 home page.

SmartNode	
Model	SN4554/EUI
Serial Number	00A0AA00AAAA
Hardware Version	2.1
Software Version	R3.20 2006-03-30 SIP
System Time	Thu, 01 Jan 1970 19:34:54 GMT The system is up for 0 days, 19 hours, 34 minutes, 54 seconds

Figure 4. SN4554 home page

---

## 6.0 Configuring your SmartNode

---

Once you have logged in you can use the browser-based graphical user interface (GUI) to configure and manage your SN4554. The SN4554 home page displays three *Immediate Actions* buttons that allow you to store the current configuration state, reload the device, and restore to factory defaults. The home page also displays certain basic system information. You can always return to the home page by clicking *Home* in the navigation bar.

The GUI consists of the following main elements:

- The “Navigation Bar” on the left edge presents you with a menu listing giving access to the various configuration and status pages of the SN4554.
- At the top of the page you see the “Current System Path” which displays the location and element currently presented in the main area.
- The rest of the page displays the configuration and status information for the different features of the SN4554.



Whenever you modify the configuration your SN4554, immediately applies your changes. However, your new settings ARE NOT PERMANENTLY SAVED (in non-volatile memory [RAM]). To survive power failure or manual reload you must store your new settings in non-volatile memory. To save your changes: return to the home page and press the Save Current Configuration button.

---

## 7.0 Additional Information

---

Refer to the *SmartNode 4554 Getting Started Guide* located on the CD-ROM shipped with your SN4554 device and available online at [www.patton.com/manuals](http://www.patton.com/manuals). For detailed information about:

- Installing, configuring, operating, and troubleshooting.
- Warranty, trademark & compliance

The CD-ROM also includes many freeware and shareware tools, including TFTP servers, and Telnet clients.

---

## A.0 Customer and Technical Support

---

Toll-Free VoIP support: call [sip:support@patton.com](tel:sip:support@patton.com) with a VoIP SIP client

Online support: [www.patton.com](http://www.patton.com)

E-mail support: [support@patton.com](mailto:support@patton.com) — answered within 1 business day

Telephone support:

- Standard: +1 (301) 975-1007 (USA), Monday–Friday: 8:00 am to 5:00 pm EST (1300 to 2200 UTC/GMT)
- Alternate: +41 (0)31 985 25 55 (Switzerland), Monday–Friday: 8:00 am to 5:00 pm CET (0900 to 1800 UTC/GMT)

Fax: +1 (253) 663-5693 (USA) or +41 (0)31 985 25 26 (Switzerland)

---

## B.0 Appendix – Factory default IP addresses

---

Factory default IP addresses and netmask configuration.

	IP Address	Network mask
WAN interface Ethernet 0 (0/0)	DHCP Client	n/a
LAN interface Ethernet 1 (0/1)	192.168.1.1	255.255.255.0
DHCP server address range (LAN)	192.168.1.10-192.168.1.99	255.255.255.0

---

## C.0 Compliance Information

---

### C.1 Compliance

---

EMC Compliance:

- EN55022, Class A
- EN55024

Safety Compliance:

- IEC 60950-1
- EN60950-1
- AS/NZS 60950

Telecom:

- TBR3
- AS/ACIF S031
- NZ ISDN Layer 3 Supplement

## C.2 EC Declaration of Conformity

---

(See section C.3 “EG-Konformitätserklärung” for German version.)

**Product Description:** SmartNode 4554

The products described above in the form as delivered are in conformity with the provisions of the following European Directive:

### R&TTE Directive 1999/5/EC

Guidelines of the European Parliament and the Committee for the Harmonization of the Legal Regulations of the Member States concerning radio equipment and telecommunications terminal equipment and the mutual recognition of their conformity.



The safety advice in the documentation accompanying the products shall be obeyed.  
The conformity to the above directive is indicated by the CE sign on the device.

The signed Declaration of Conformity can be downloaded from [www.patton.com/certifications/](http://www.patton.com/certifications/).

### **C.3 EG-Konformitätserklärung**

---

(see section C.2 “EC Declaration of Conformity” for English version)

**Produktbezeichnung:** SmartNode 4554

Die bezeichneten Produkte stimmen in der von uns in Verkehr gebrachten Ausführung mit den Vorschriften folgender Richtlinie überein:

**R&TTE 1999/5/EG**

Richtlinie des europäischen Parlaments und des Rates zur Angleichung der Rechtsvorschriften der Mitgliedstaaten über Funkanlagen und Telekommunikations-Einrichtungen und die gegenseitige Anerkennung ihrer Konformität.



Die Sicherheitshinweise in der mitgelieferten Produktdokumentation sind zu beachten. Die Konformität mit der oben erwähnten Richtlinie wird durch das CE-Zeichen auf dem Gerät bestätigt.

Die unterzeichnete Konformitätserklärung kann heruntergeladen werden von: [www.patton.com/certifications/](http://www.patton.com/certifications/).

### **C.4 Authorized European Representative**

---

D R M Green

European Compliance Services Limited.

Oakdene House, Oak Road

Watchfield,

Swindon, Wilts SN6 8TD, UK

## Copyright statement

Copyright © 2007, Patton Electronics Company. All rights reserved.

The information in this document is subject to change without notice. Patton Electronics assumes no liability for errors that may appear in this document.

## Trademarks statement

The term *SmartNode* is a trademark of Patton Electronics Company. All other trademarks presented in this document are the property of their respective owners.

## Warranty

For warranty information, refer to the *SmartNode 4554 Getting Started Guide* located on the CD-ROM that came with your IAD or available online at [www.patton.com](http://www.patton.com).



In accordance with the requirements of council directive 2002/96/EC on Waste of Electrical and Electronic Equipment (WEEE), ensure that at end-of-life you separate this product from other waste and scrap and deliver to the WEEE collection system in your country for recycling.

