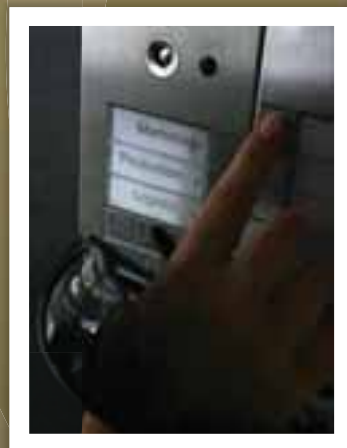




The IP Video Door Phone is an easy and affordable way of door entry communication from entrance over any distance. It is ideal for any door entry communication environment, the virtual office and all IP video communications for business or residential users.

The IP Helios is an advanced IP video door phone based on SIP standard, competitively priced and easy to use. The IP Helios combines professional design and technology features with excellent picture quality, ease of deployment and broad interoperability with 3rd party SIP products. The IP Helios is the first H.264 IP video door phone that supports real-time high-quality video. 2N solution is unique to the market that includes unique features with easy to use and setup.

- Complete door entry solution
- Voice, video, keypad & access control system in one box
- Modern design
- High quality audio & video
- Remote access



IP communication:

Communication over IP is provided by the SIP protocol. Video & voice is transmitted via LAN or Internet.



Code lock:

Directly from the door opening. It is possible to define up to ten global passwords for each of the two switches opening the door. Additionally, it is possible to define one private password for each apartment. Opening period is configurable as well as double door opening delay.



Card reader:

An installed card reader offers another resource for access to your building. Up to 500 proximity cards or key fobs are available.

If you connect the reader module to your PC, you can check the entries and departures of the individual card holders. If the door is forced, you will receive an alarm announcement.



Additional switch:

It is intended to be used with the other devices i.e. door locks, barriers, lighting, CCTV, etc. An additional switch is an optional module that can be installed additionally.



Video:

A connected video camera makes possible visual inspection of those, who are entering building. The picture can be sent either to your PC or Video Phone



Time scheduling:

Allows you to be reachable at all times. Your entry communication will be transferred according to predefined priorities. Entry Access would be granted based on automatic time scheduling.



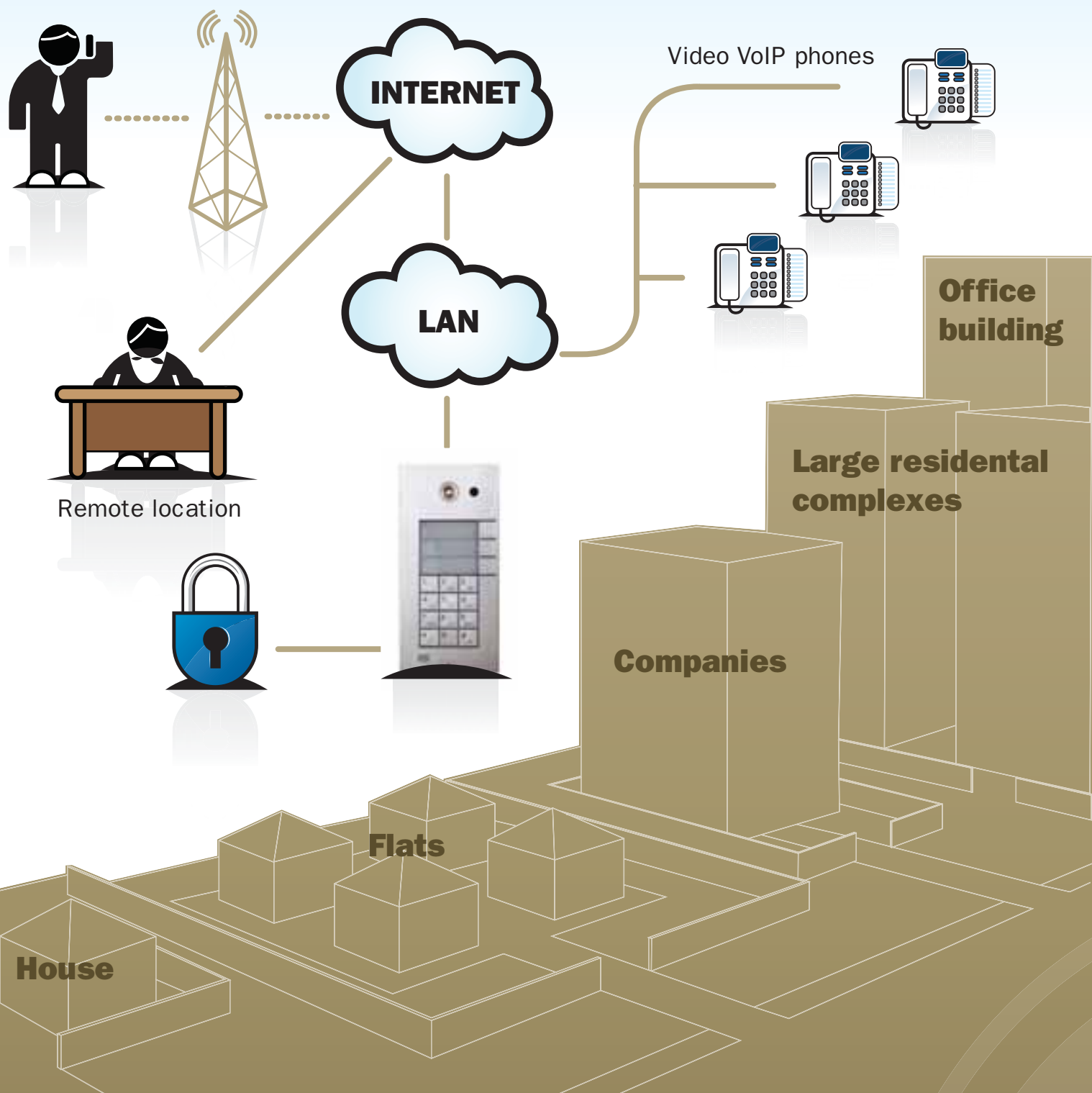
Web based programming:

For easier setting up the parameters, Helios IP has the web based programming interface. You can access the configuration tool from any place in the network and maintain the device remotely.



How does 2N Helios IP work?

Wireless/Cellular



Who is the 2N Helios IP door phone intended for?

- Private houses
- Block of flats
- Small & large companies
- Large residential complexes
- Public sector
- Hospitals
- Universities
- Others



Apartment building

- LAN structure solution
- Video & voice are transferred through data base network
- Comfortable & secure way to see and allow entry to a visitor

Call is transferred to the particular flat via LAN. Reliable solution for a block of flats with data structure. The call from the Helios is accepted on the IP video phone or PC.



Remote access

- Be reachable at all times
- Opening the door via PC or Smart Phone from any place
- Talk too & see your visitor

Solution for companies with/without receptionist, after hours etc... The receptionist is not at the desk and the SIP based PBX transfers the call to the Smart Phone or remote PC. Call can then be answered and door opened remotely.



Office

- Communication occurs via LAN network
- Zero costs for calls
- Transfer of voice & video directly to IP video phone or PC

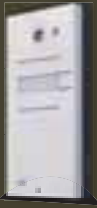
Communication for door entry over IP protocol is performed in a state of art manner. Over IP protocol it is possible not only to communicate with the person standing in front of the entrance, but it is also possible to see and let them enter.

All you need is SIP VoIP phone or PC.



Basic modules

With camera



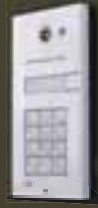
9137110CE
1 button & camera



9137130CE
3 buttons & camera



9137160CE
6 buttons & camera



9137110CKE
1 button & keypad
& camera



9137130CKE
3 buttons & keypad
& camera



9137160CKE
6 buttons & keypad
& camera

Without camera

9137110E
1 button

9137130E
3 buttons

9137160E
6 buttons

9137110KE
1 button & keypad

9137130KE
3 buttons & keypad

9137160KE
6 buttons & keypad

100 x 210 x 29 mm

Extenders



9135181E
Extender 8 buttons



9135182E
Extender 16 buttons



9135310E
Infopanel without keypad

100 x 210 x 29 mm

Vandal resistant protection



9135511E
VR protection 3 buttons,
masonry fitting



9135511KE
VR protection 3 buttons
& keypad, masonry fitting



9135515E
VR protection extender
8 buttons, masonry fitting

Mask: 138,5 x 241 mm, Hole: 110 x 220 x 50 mm

Roofs & boxes



9135331E
Roof for 1 module



9135332E
Roof for 2 modules



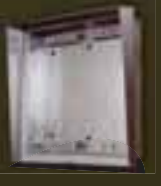
9135351E
Flush fixed box
for 1 module



9135352E
Flush fixed box
for 2 modules



9135361E
Roof & box for masonry
fitting - 1 module



9135361E
Roof & box for masonry
fitting - 2 modules

103 x 218 x 60 mm

203 x 218 x 60 mm

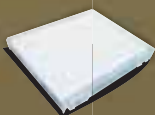
Mask: 125 x 235 x 46 mm
Hole: 110 x 220 x 50 mm

Mask: 225 x 235 x 46 mm
Hole: 210 x 220 x 50 mm

Mask: 129 x 240 x 41 mm
Hole: 110 x 220 x 50 mm

Mask: 229 x 240 x 41 mm
Hole: 210 x 220 x 50 mm

Accessories



9135311E
Infopanel name
plate



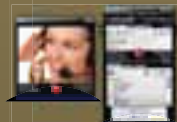
9135302E
Double button
name plate



9135301E
Name plate



9137310E
Additional switch



91378900
SW Phone



91378350
VoIP Video Phone



91378100
PoE Injectors

Complementary products

2N Helios IP modular system

