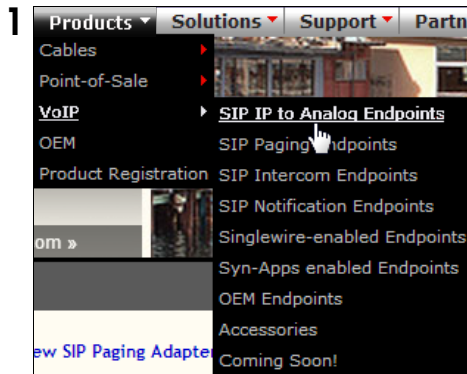


## 1.0 Out-of-Box and Prior to Final Installation

- 1.1. Verify that you have received all of the parts listed on the *Installation Quick Reference* placemat.
- 1.2. Download the current manual, otherwise known as an *Operation Guide*, which is available on the **Documentation** page at the following website address:

<http://www.cyberdata.net/products/voip/legacyanalog/sippagingadapter/docs.html>

**Note** You can also navigate to the **Documentation** page by going to [www.CyberData.net](http://www.CyberData.net) and following the steps that are indicated by the following figures:

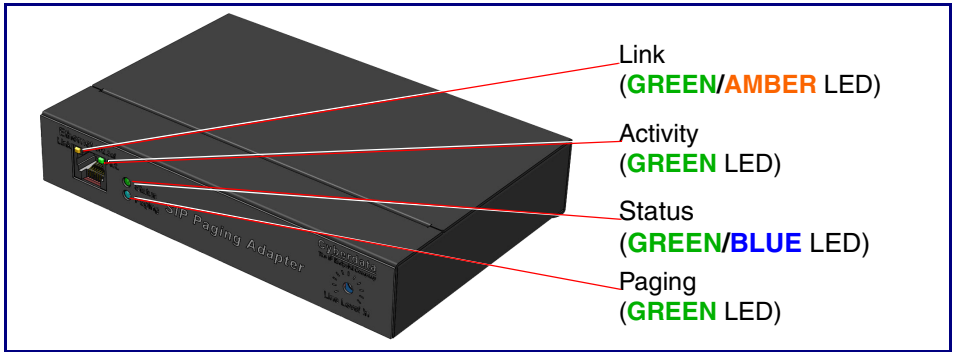


## 2.0 Select Power Source

PoE Switch	PoE Injector
Set PoE power type to Class 0 = 15.4W	CAT6 cable recommended— for longer distances
	Be sure you are using a non-PoE switch or port
Make sure port is not in trunk mode	
Set port to full duplex/ 100mbps	
Spanning Tree Protocol (STP) must be disabled or Portfast enabled	

## 3.0 Power Test

3.1. Plug in the CyberData device and monitor the LED activity on the front of the device. See the following figure:



3.2. The **GREEN/BLUE Status** LED and the **GREEN Paging** LED both blink at a rate of 10 times per second during the initial network setup.

The round, **GREEN/BLUE Status** LED on the front of the Paging Server comes on indicating that the power is on. Once the device has been initialized, this LED blinks at one second intervals.

The square, **GREEN/AMBER Link** LED above the Ethernet port indicates that the network connection has been established. The Link LED changes color to confirm the auto-negotiated connection speed:

- The Link LED is **GREEN** at 10 Mbps.
- The Link LED is **AMBER** at 100 Mbps.

The **GREEN Paging** LED comes on while the device is booting and turns off after 15 seconds. This light blinks when a page is in progress. You can disable **Beep on Initialization** on the **Device Configuration** page.

The square, **GREEN Activity** LED blinks when there is network traffic.

If there is no DHCP server available on the network, it will try 12 times with a three second delay between tries and eventually fall back to the programmed static IP address (by default 10.10.10.10). This process will take approximately 80 seconds.

3.3. When the device has completed the initialization process, briefly press and then quickly release the RTFM switch to announce the IP address.

This concludes the power test. Go to [Section 4.0, "Connecting to a Network in a Test Environment"](#).

---

## 4.0 Connecting to a Network in a Test Environment

**Note** The following connections are usually needed for this procedure:

- Computer
- PoE switch or injector
- CyberData device

4.1. In a test environment, use a computer that is connected to the same switch as a single CyberData device. Note the subnet of the test computer.

4.2. Use the CyberData Discovery Utility program to locate the device on the network. You can download the Discovery Utility program from the following website address:

[http://www.cyberdata.net/support/voip/discovery\\_utility.html](http://www.cyberdata.net/support/voip/discovery_utility.html)

4.3. Wait for initialization to complete before using the Discovery Utility program to scan for a device. The device will show the current IP address, MAC address, and serial number.

4.4. Select the device.

4.5. Click **Launch Browser**. If the IP address is in a reachable subnet from the computer that you are using to access the device, the Discovery Utility program should be able to launch the browser window which is configured to the device's IP address.

4.6. Log on to the web interface by using the default username (**admin**) and password (**admin**) to configure the device.

4.7. The device is now ready to be set for your desired network configuration. You may reference our IP-PBX specific configurations at the following website address:

<http://www.cyberdata.net/support/server/index.html>

---

## 5.0 Contacting CyberData VoIP Technical Support

We encourage you to access our Technical Support help desk at the following address:

<http://support.cyberdata.net/>

**Note** You can also access the Technical Support help desk by navigating through menus on the CyberData website ([www.CyberData.net](http://www.CyberData.net)) as shown in the following figure:



The Technical Support help desk provides the options of accessing documentation for your CyberData product, browsing the knowledge base, and submitting a troubleshooting ticket.

Please be advised requests for Returned Materials Authorization (RMA) numbers require an active VoIP Technical Support ticket number. A product will not be accepted for return without an approved RMA number.