

# DrayTek

# Vigor2952 Series

## Dual-WAN Security Firewall



# Quick Start Guide (Wired Model)

## V2.1

# **Vigor2952 Series**

## **Dual-WAN Security Firewall**

### **Quick Start Guide**

#### **(for Wired Model)**

Version: 2.1

Firmware Version: V3.8.4.2\_RC14

(For future update, please visit DrayTek web site)

Date: August 22, 2017

## Intellectual Property Rights (IPR) Information

### Copyrights

© All rights reserved. This publication contains information that is protected by copyright. No part may be reproduced, transmitted, transcribed, stored in a retrieval system, or translated into any language without written permission from the copyright holders.

### Trademarks

The following trademarks are used in this document:

- Microsoft is a registered trademark of Microsoft Corp.
- Windows, Windows 95, 98, Me, NT, 2000, XP, Vista, 7, 8 and Explorer are trademarks of Microsoft Corp.
- Apple and Mac OS are registered trademarks of Apple Inc.
- Other products may be trademarks or registered trademarks of their respective manufacturers.

## Safety Instructions and Approval

### Safety Instructions

- Read the installation guide thoroughly before you set up the router.
- The router is a complicated electronic unit that may be repaired only by authorized and qualified personnel. Do not try to open or repair the router yourself.
- Do not place the router in a damp or humid place, e.g. a bathroom.
- Do not stack the routers.
- The router should be used in a sheltered area, within a temperature range of 0 to +45 Celsius for Vigor2952/Vigor2952n and 0 to +40 Celsius for Vigor2952P/Vigor2952Pn.
- Do not expose the router to direct sunlight or other heat sources. The housing and electronic components may be damaged by direct sunlight or heat sources.
- Do not deploy the cable for LAN connection outdoor to prevent electronic shock hazards.
- Keep the package out of reach of children.
- When you want to dispose of the router, please follow local regulations on conservation of the environment.

### Warranty

We warrant to the original end user (purchaser) that the router will be free from any defects in workmanship or materials for a period of two (2) years from the date of purchase from the dealer. Please keep your purchase receipt in a safe place as it serves as proof of date of purchase. During the warranty period, and upon proof of purchase, should the product have indications of failure due to faulty workmanship and/or materials, we will, at our discretion, repair or replace the defective products or components, without charge for either parts or labor, to whatever extent we deem necessary to restore the product to proper operating condition. Any replacement will consist of a new or re-manufactured functionally equivalent product of equal value, and will be offered solely at our discretion. This warranty will not apply if the product is modified, misused, tampered with, damaged by an act of God, or subjected to abnormal working conditions. The warranty does not cover the bundled or licensed software of other vendors. Defects which do not significantly affect the usability of the product will not be covered by the warranty. We reserve the right to revise the manual and online documentation and to make changes from time to time in the contents hereof without obligation to notify any person of such revision or changes.



## EU Declaration of Conformity

We DrayTek Corp. , office at No.26, Fu Shing Road, HuKou County, Hsin-Chu Industry Park, Hsinchu 300, Taiwan , R.O.C., declare under our sole responsibility that the product

- **Product name:** Dual-WAN Security Firewall
- **Model number:** Vigor2952, Vigor2952P
- **Manufacturer:** DrayTek Corp.
- **Address:** No.26, Fu Shing Road, HuKou County, Hsin-Chu Industry Park, Hsinchu 300, Taiwan , R.O.C.

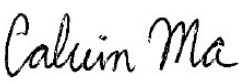
is in conformity with the relevant Union harmonisation legislation:

EMC Directive 2014/30/EU , Low Voltage Directive 2014/35/EU and RoHS 2011/65/EU with reference to the following standards

Standard	Version / Issue date
EN 55032	2012+AC:2013 class A
EN 61000-3-2	2014 Class A
EN 61000-3-3	2013
EN 55024	2010+A1:2015
EN 60950-1	2006 +A11:2009 +A1:2010 +A12:2011+ A2:2013

Hsinchu  
(place)

22nd June, 2017  
(date)

  
Calvin Ma / President  
(Legal Signature)

## Regulatory Information

### Federal Communication Commission Interference Statement

This equipment has been tested and found to comply with the limits for a Class A digital device, pursuant to part 15 of the FCC Rules. These limits are designed to provide reasonable protection against harmful interference when the equipment is operated in a commercial environment. This equipment generates, uses, and can radiate radio frequency energy and, if not installed and used in accordance with the instruction manual, may cause harmful interference to radio communications. Operation of this equipment in a residential area is likely to cause harmful interference in which case the user will be required to correct the interference at his own expense.

This device complies with Part 15 of the FCC Rules. Operation is subject to the following two conditions:

- (1) This device may not cause harmful interference, and
- (2) This device may accept any interference received, including interference that may cause undesired operation.

Any changes or modifications not expressly approved by the party responsible for compliance could void the user's authority to operate this equipment.

This equipment complies with FCC radiation exposure limits set forth for an uncontrolled environment. This equipment should be installed and operated with minimum distance 20cm between the radiator & your body.



More update, please visit [www.draytek.com](http://www.draytek.com).

## Be a Registered Owner

Web registration is preferred. You can register your Vigor router via <http://www.draytek.com>.

## Firmware & Tools Updates

Due to the continuous evolution of DrayTek technology, all routers will be regularly upgraded. Please consult the DrayTek web site for more information on newest firmware, tools and documents.

<http://www.draytek.com>

## ***Table of Contents***

<b>1. Introduction.....</b>	<b>1</b>
<b>2. Package Content .....</b>	<b>3</b>
<b>3. Panel Explanation.....</b>	<b>4</b>
<b>4. Hardware Installation .....</b>	<b>6</b>
4.1 Network Connection .....	6
4.2 Wall-Mounted Installation .....	7
<b>5. Software Configuration .....</b>	<b>8</b>
<b>6. Customer Service .....</b>	<b>13</b>

# 1. Introduction

Vigor2952 is a broadband router with dual-WAN interface. It provides policy-based load-balance, fail-over and BoD (Bandwidth on Demand), also it integrates IP layer QoS, NAT session/bandwidth management to help users control works well with large bandwidth.

By adopting hardware-based VPN platform, hardware encryption of AES/DES/3DS and hardware key hash of SHA-1/MD5, the router increases the performance of VPN greatly, and offers several protocols (such as IPSec/PPTP/L2TP) with up to 100 VPN tunnels.

The object-originated design used in SPI (Stateful Packet Inspection) firewall allows users to set firewall policy with ease. CSM (Content Security Management) provides users control and management in IM (Instant Messenger) and P2P (Peer to Peer) more efficiency than before. By the way, DoS/DDoS prevention and URL/Web content filter strengthen the security outside and control inside.

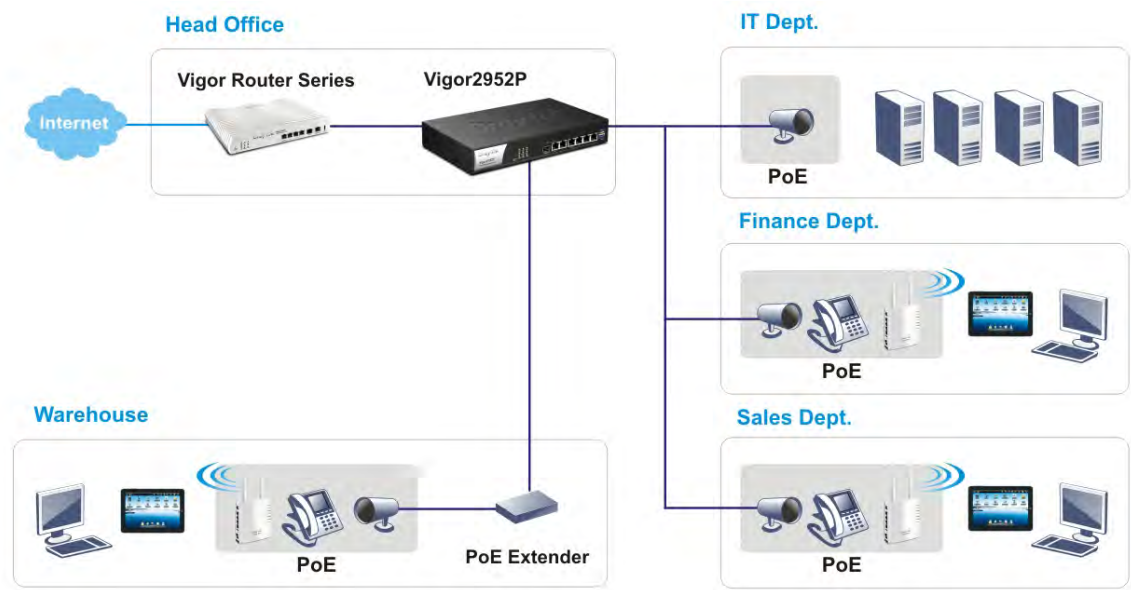
Vigor2952 series supports USB interface for connecting USB printer to share printing function, 3G/4G USB modem for network connection, or connectivity for network FTP service.

## Business Continuity - Business Growth Multiple subnets





PoE Application

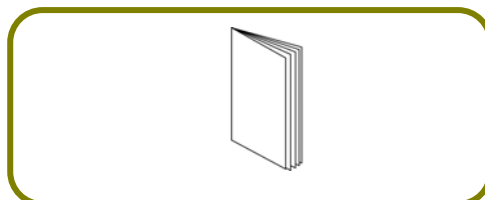


## 2. Package Content

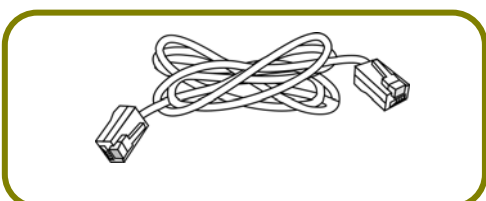
Take a look at the package content. If there is anything missed or damaged, please contact DrayTek or dealer immediately.



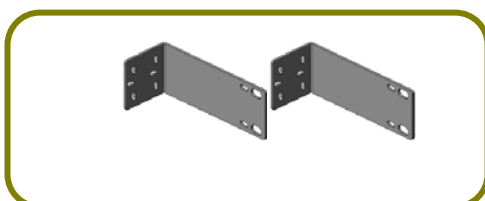
**Vigor Router**



**Quick Start Guide**



**RJ-45 Cat-5 Ethernet Cable**

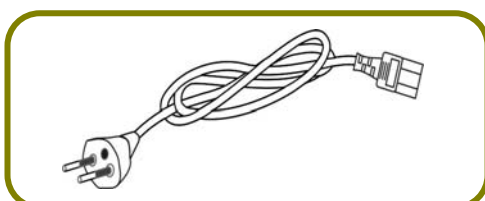


**Rack mount kit (brackets)**

The type of the power adapter depends on the country that the router will be installed. \* The maximum power consumption is *17-23 Watt*.



**UK-type Power Cord**



**EU-type Power Cord**



**USA/Taiwan-type Power Cord**



**AU/NZ-type Power Cord**

### 3. Panel Explanation



LED	Status	Explanation
ACT (Activity)	Blinking	The router is powered on and running normally.
	Off	The router is powered off.
USB1~USB2	On	A USB device is connected and active.
	Blinking	The data is transmitting.
SFP	On	No fiber line connected.
	Off	Fiber line connected.
WAN1~WAN2	On	The WAN connection is ready.
	Blinking	It will blink while transmitting data.
QoS	On	The QoS function is active.
CSM	On	The profile of CSM (Content Security Management) for IM/P2P application is enabled from <b>Firewall &gt;&gt; General Setup</b> . (Such profile is established under CSM menu).
PoE	On	Power sourcing equipment for PoE is enabled.
	Off	Power sourcing equipment for PoE is disabled.
VPN	On	VPN tunnel is up and down.
	Off	VPN services are disabled.
	Blinking	Traffic is passing through VPN tunnel.

#### LED on Connector

WAN1 or Fiber WAN	Left LED (Green)	On	The port is connected.
		Off	The port is disconnected.
		Blinking	The data is transmitting through WAN1 or Fiber WAN.
	Right LED (Green)	On	The WAN1/Fiber port is connected with 1000Mbps.
		Off	The WAN1/Fiber port is connected with 10/100Mbps.
WAN2	Left LED (Green)	On	The port is connected.
		Off	The port is disconnected.
		Blinking	The data is transmitting.
	Right LED (Green)	On	The port is connected with 1000Mbps.
		Off	The port is connected with 10/100Mbps.
LAN1~LAN4	Left LED (Green)	On	The port is connected.
		Off	The port is disconnected.
		Blinking	The data is transmitting.

	Right LED (Green)	On	The port is connected with 1000Mbps.
		Off	The port is connected with 10/100Mbps.



Interface	Description
Factory Reset	Restore the default settings. Usage: Turn on the router (ACT LED is blinking). Press the hole and keep for more than 5 seconds. When you see the ACT LED begins to blink rapidly than usual, release the button. Then the router will restart with the factory default configuration.
WAN(SFP)	Fiber connector for accessing the Internet.
WAN1~WAN2	Connector for remote networked devices.
LAN1~LAN4	Connectors for local networked devices. For Vigor2925P, such connectors support PoE device with up to 30 watt power which is compliant with IEEE 802.3at standard.
USB1~USB2	Connector for a USB device (for 3G/4G USB Modem or printer).
PWR	Connector for a power cord.
ON/OFF	Power Switch.



<b>Note 1</b>	Vigor router will use either <b>Fiber WAN</b> or <b>WAN1</b> for Internet connection. If both Fiber WAN and WAN1 are connected at the same time, Fiber WAN will be the first choice.
<b>Note 2</b>	The PoE Power budget is up to 60W.

## 4. Hardware Installation

This section will guide you to install the router through hardware connection and configure the router's settings through web browser.

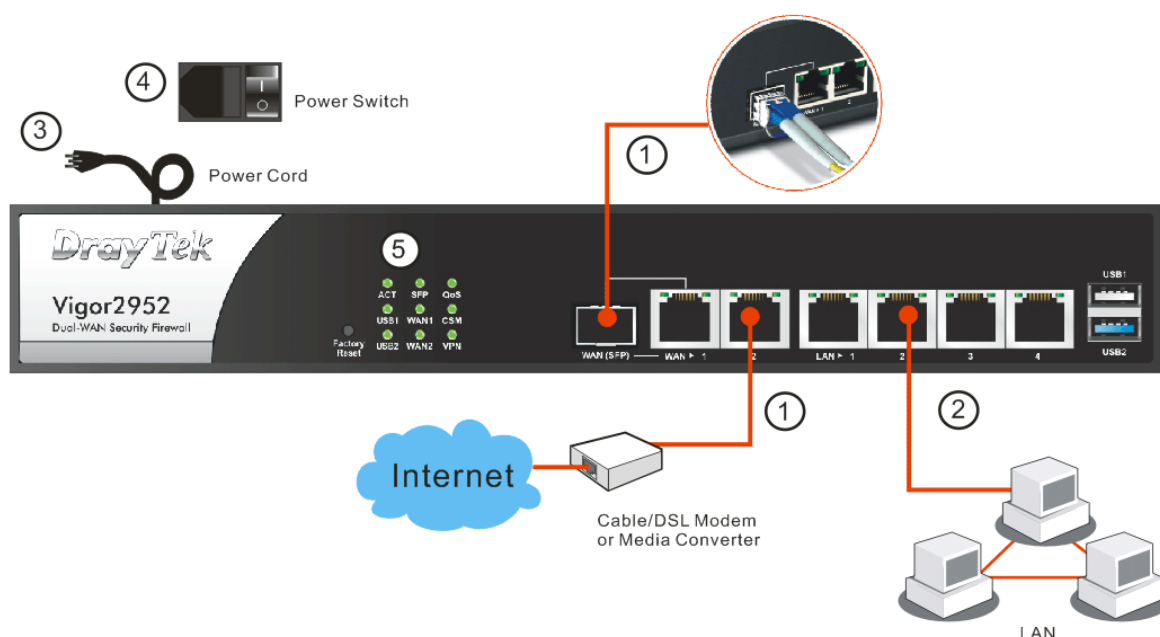
Before starting to configure the router (taking Vigor2952 for example), you have to connect your devices correctly.

### 4.1 Network Connection

1. Connect a cable Modem/DSL Modem/Media Converter (depends on your requirement) to any WAN port of router with Ethernet cable (RJ-45). Or, connect the fiber cable to the WAN (SFP) port of router.
2. Connect one end of an Ethernet cable (RJ-45) to one of the LAN ports of the router and the other end of the cable (RJ-45) into the Ethernet port on your computer (that device also can connect to other computers to form a small area network).
3. Connect the power cord to the router's power port on the rear panel, and the other side into a wall outlet.
4. Power on the device by pressing down the power switch on the rear panel.
5. The system starts to initiate. After completing the system test, the **ACT** LED will light up and start blinking. The **WAN1/WAN2/LAN** connector LED (Left or Right) will light up according to the network card feature (1000 or 100) of the device that it connected.

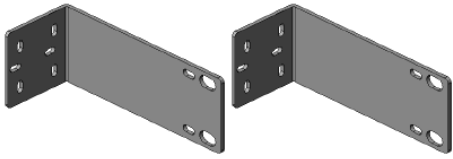
If Fiber connection is used, check if SFP LED lights up or not.

(For the detailed information of LED status, please refer to section 3. Panel Explanation)

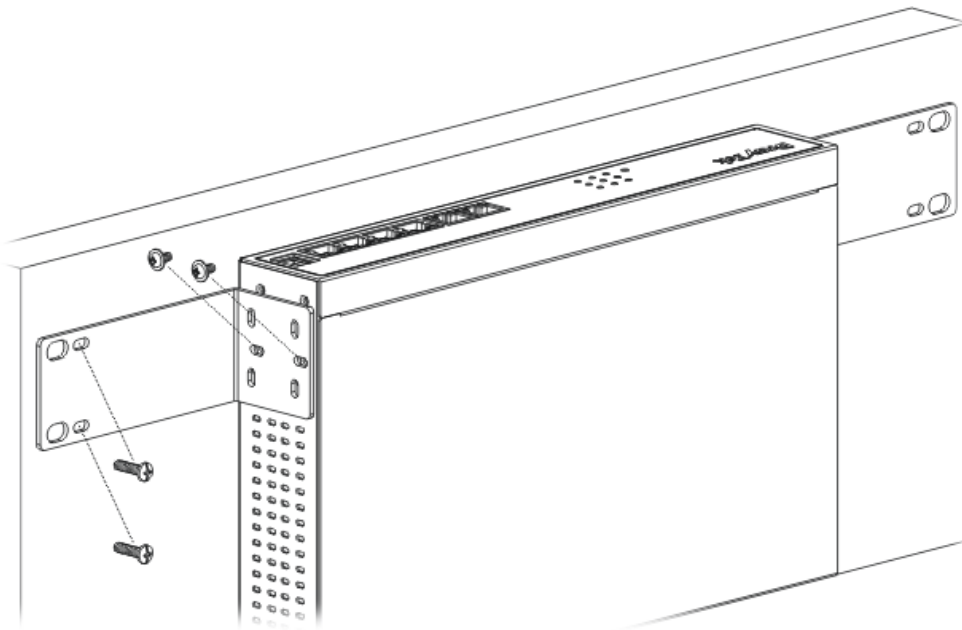


## 4.2 Wall-Mounted Installation

Vigor can be mounted on the wall by using standard brackets shown below.



Choose a flat surface (on the wall) which is suitable for placing the router. Make the screw holes on the short side of the bracket aim at the screw holes on the router. Next, fasten both the bracket and the router with two screws; and fasten both the wall and the bracket with another two screws. Refer to the following figure.



Then, continue to fasten the screws on the other side of the router and the wall with other screws.

When you finished about procedure, the router has been mounted on the wall firmly.

## 5. Software Configuration

To access Internet, please finish basic configuration after completing the hardware installation.

The **Quick Start Wizard** is designed for you to easily set up your router for Internet access. You can directly access the **Quick Start Wizard** via Web Configurator.

1. Make sure your PC connects to the router correctly.



### Note

You may either simply set up your computer to get IP dynamically from the router or set up the IP address of the computer to be the same subnet as the **default IP address of Vigor router 192.168.1.1**. For the detailed information, please refer to the later section - Trouble Shooting of the guide.

2. Open a web browser on your PC and type **http://192.168.1.1**. A pop-up window will open to ask for username and password. Please type "admin/admin" as the Username/Password and click **Login**.

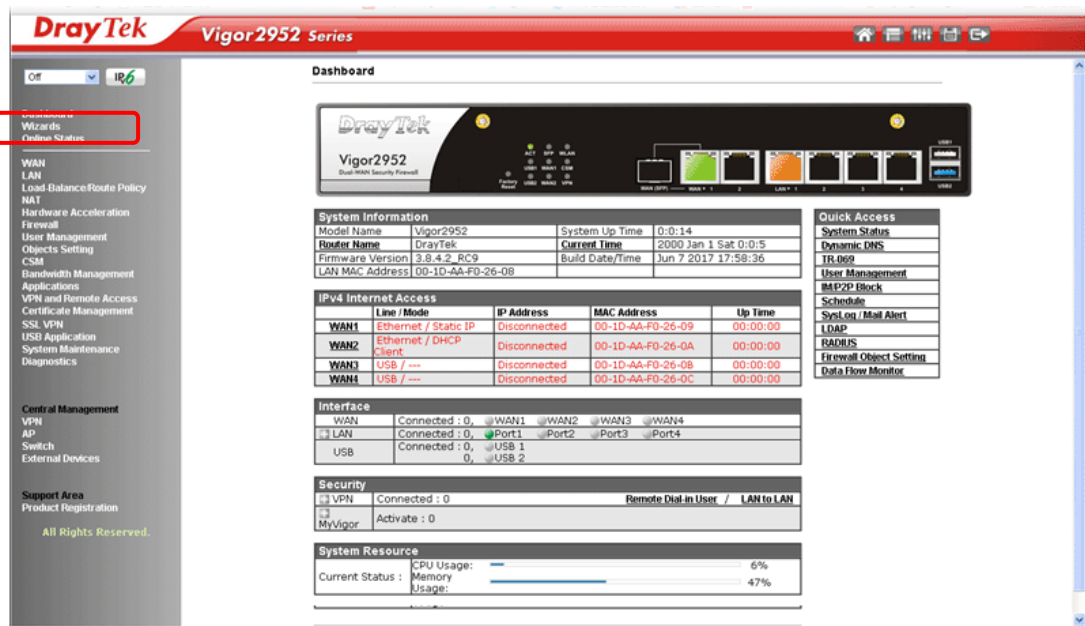


### Note

If you fail to access to the web configuration, please go to "Trouble Shooting" for detecting and solving your problem.



- Now, the Main Screen will pop up. Click Wizards>>Quick Start Wizard.



#### Note

The home page will change slightly in accordance with the router you have.

- Enter the login password on the field of New Password and retype it on the field of Confirm Password. Then click Next to continue.

#### Quick Start Wizard

##### Enter login password

Please enter an alpha-numeric string as your **Password** (Max 23 characters).

Old Password

New Password

Confirm Password


< Back

Next >

Finish

Cancel



5. On the next page as shown below, please select the WAN interface (WAN 1 to WAN4) that you use. If Fiber interface is used, please choose WAN1. If Ethernet interface is used, please choose WAN2. If USB interface is used, choose WAN3 or WAN4. Here we take WAN2 as an example. Then, click **Next** for next step.

#### Quick Start Wizard

##### WAN Interface

WAN Interface:	WAN2 ▼
Display Name:	
Physical Mode:	Ethernet
Physical Type:	Auto negotiation ▼

< Back

Next >

Finish

Cancel



#### Note

There are four WAN selections available for you to choose. In which WAN3 /WAN4 is selected for 3G/4G USB modem connection.

6. On the next page as shown below, please select the appropriate protocol according to the information from your ISP. For example, you should select PPPoE mode if the ISP provides you PPPoE interface. Then click **Next** for next step.

#### Quick Start Wizard

##### Connect to Internet

**WAN 2**

Select one of the following Internet Access types provided by your ISP.

- ☒ PPPoE
- ☐ PPTP
- ☐ L2TP
- ☐ Static IP
- ☐ DHCP

< Back

Next >

Finish

Cancel

**PPPoE:** If you click **PPPoE** as the protocol, after clicking **Next**, you will get the following web page. Please manually enter the Username/Password provided by your ISP. Then click **Next**.

**Quick Start Wizard**

---

**PPPoE Client Mode**

<b>WAN 2</b>	
Enter the user name and password provided by your ISP.	
Service Name (Optional)	<input type="text"/>
Username	<input type="text"/>
Password	<input type="password"/>
Confirm Password	<input type="password"/>

**PPTP/L2TP:** if you click **PPTP/L2TP**, you will get the following page. Please type in all the information originally provided by your ISP. Then click **Next** for next step.

**Quick Start Wizard**

---

**L2TP Client Mode**

<b>WAN 2</b>	
Enter the username, password, WAN IP configuration and L2TP server IP provided by your ISP.	
Username	<input type="text"/>
Password	<input type="password"/>
Confirm Password	<input type="password"/>
WAN IP Configuration	
<input type="radio"/> Obtain an IP address automatically	
<input checked="" type="radio"/> Specify an IP address	
IP Address	<input type="text"/>
Subnet Mask	<input type="text"/>
Gateway	<input type="text"/>
Primary DNS	<input type="text" value="8.8.8.8"/>
Second DNS	<input type="text" value="8.8.4.4"/>
L2TP Server	<input type="text"/>

**Static IP:** if you click Static IP, you will get the following page. Please type in the IP address information originally provided by your ISP. Then click **Next** for next step.

**Quick Start Wizard**

---

**Static IP Client Mode**

<b>WAN 2</b>	
Enter the Static IP configuration provided by your ISP.	
WAN IP	<input type="text" value="172.16.3.102"/>
Subnet Mask	<input type="text" value="255.255.255.0"/>
Gateway	<input type="text" value="172.16.3.1"/>
Primary DNS	<input type="text" value="8.8.8.8"/>
Secondary DNS	<input type="text" value="8.8.4.4"/> (optional)

**DHCP:** if you click DHCP, you will get the following page. Simply click **Next** to continue.

**Quick Start Wizard**

---

**DHCP Client Mode**

<b>WAN 2</b>	
If your ISP requires you to enter a specific host name or specific MAC address, please enter it in.	
Host Name	<input type="text"/> (optional)
MAC	<input type="text" value="00"/> <input type="text" value="-1D"/> <input type="text" value="-AA"/> <input type="text" value="-CA"/> <input type="text" value="-77"/> <input type="text" value="-AA"/> (optional)

7. Now you can see the following screen. It indicates that the setup is complete. Different types of connection modes will have different summary. Click **Finish** and then restart the router. Afterward, you will enjoy surfing on the Internet.

#### Quick Start Wizard

---

Please confirm your settings:

WAN Interface:	WAN2
Physical Mode:	Ethernet
Internet Access:	DHCP

Click **Back** to modify changes if necessary. Otherwise, click **Finish** to save the current settings and restart the Vigor router.

< Back

Next >

Finish

Cancel

## 6. Customer Service

If the router cannot work correctly after trying many efforts, please contact your dealer/DrayTek for further help right away. For any questions, please feel free to send e-mail to [support@draytek.com](mailto:support@draytek.com).