

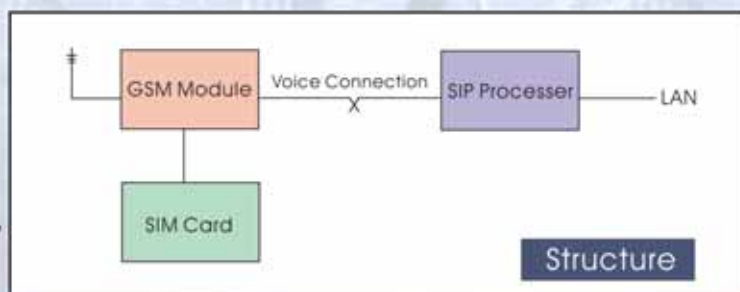
MV-370 Mobile VoIP VoIP GSM Gateway



MV-370 VoIP GSM Gateway is the conformity of MT-350 GSM Interface and VoIP Gateway. One of application for MT-350 is to connect a VoIP Gateway, and MV-370 takes the feature of MT-350 and VoIP Gateway for call termination (VoIP to GSM) and origination (GSM to VoIP), and efficient to utilize the same circuit of both , but without FXO and FXS interface transformation , this could save the material cost as well as improve the voice quality during communication.

Major Function

- VoIP(SIP) 、GSM conversion.(MV-370)
- VoIP(SIP) 、CDMA conversion.(MV-370C)
- 50 sets of LAN --> MOBILE routes setting ,
50 sets of MOBILE --> LAN routes setting.
- Voice response for setting and status(dial in from mobile).
- For call termination (VoIP to GSM) and origination (GSM to VoIP).
- Standard SIP(RFC2543 、RFC3261) protocol 、communicates with other gateway or PC
- All functions can be set on web.

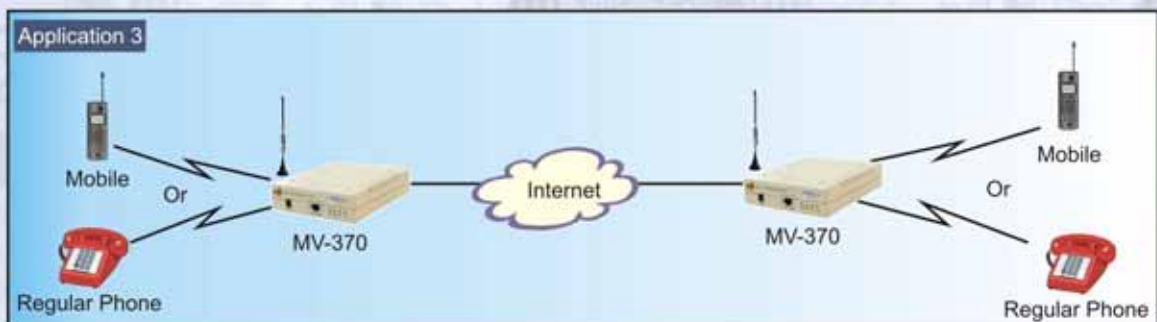
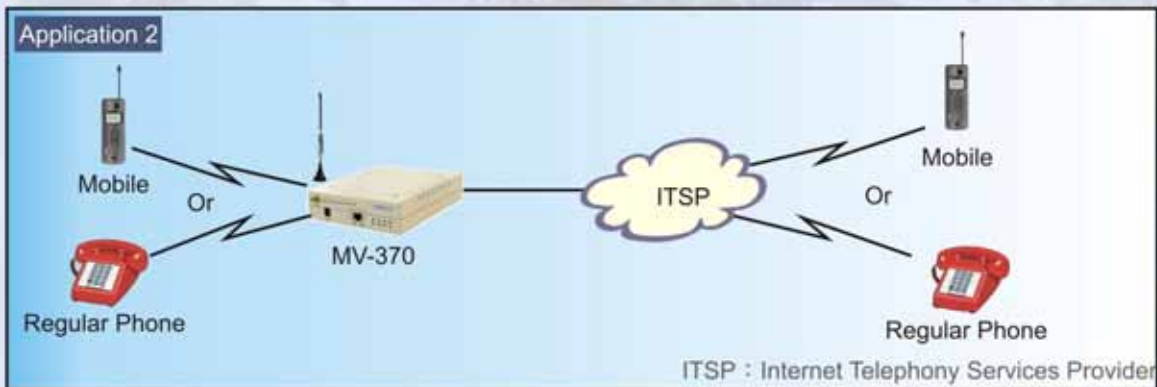
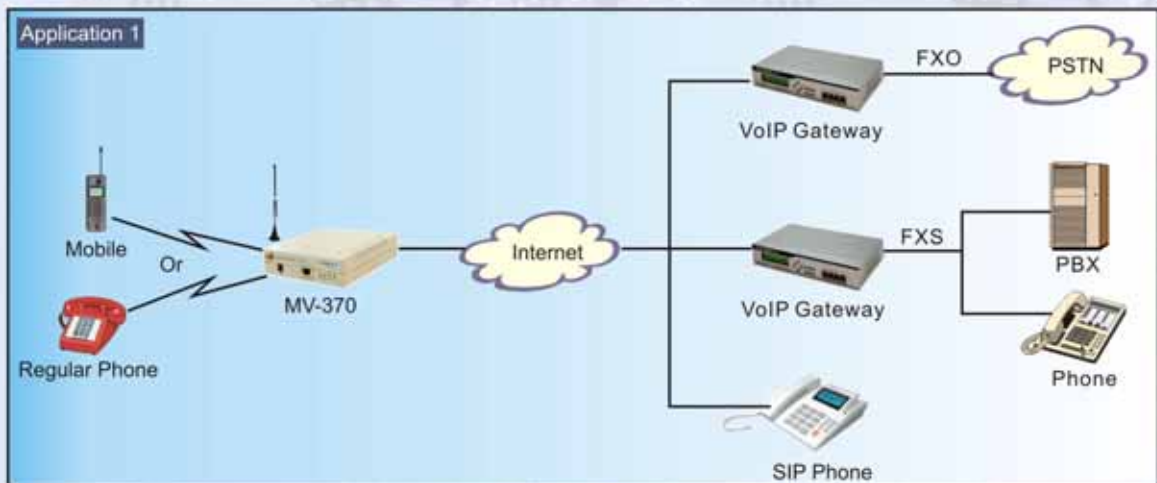


Specification

- Protocols : SIP (RFC2543 、RFC3261)
- TCP/IP : IP/TCP/UDP/RTP/RTCP/ 、CMP/ARP/RARP/SNTP 、DHCP/DNS Client 、IEEE802.1P/Q 、ToS/DiffServ 、NAT Traversal 、STUN 、uPnP 、IP Assignment 、Static IP 、DHCP 、PPPoE
- Codec : G.711 u-Law 、G.711 a-Law 、G.723.1 (5.3k) 、G.723.1 (6.3k) 、G.729A 、G.729A/B
Voice Quality 、VAD 、CNG 、AEC 、LEC 、Packet loss
- CDMA (MV-370C) : 800MHz CDMA 、Supports cdma2000 1xRTT Air Interface 、Backward compatibility from IS-2000 to IS-95A/B 、Support Voice for both 13k QCELP and EVRC
Supports both full rate and 1/8 gating on the reverse link
- GSM (MV-370) : BAND: EGSM 900/DCS 1800 MHZ 、Speech Service with EFR
(Enhance Full Rate)/FR (Full Rate)/HR (Half Rate) Codec.

MV-370 Mobile VoIP VoIP GSM Gateway

Application



PORTech Communications Inc.

150, Shiang Shung North Road., Taichung, Taiwan 403, R.O.C
 TEL: 886-4-23058000 FAX: 886-4-23022596
 E-mail: info@portech.com.tw
 Skype Account: portech
 http://www.portech.com.tw