



2N[®] VoiceBlue Next



User Manual

Version 3.0
Firmware 01.00.04

www.2n.cz

The 2N TELEKOMUNIKACE a.s. joint-stock company is a Czech manufacturer and supplier of telecommunications equipment.



The product family developed by 2N TELEKOMUNIKACE a.s. includes GSM gateways, private branch exchanges (PBX), and door and lift communicators. 2N TELEKOMUNIKACE a.s. has been ranked among the Czech top companies for years and represented a symbol of stability and prosperity on the telecommunications market for almost two decades. At present, we export our products into over 120 countries worldwide and have exclusive distributors on all continents.



2N[®] is a registered trademark of 2N TELEKOMUNIKACE a.s.. Any product and/or other names mentioned herein are registered trademarks and/or trademarks or brands protected by law.



2N TELEKOMUNIKACE administers the FAQ database to help you quickly find information and to answer your questions about 2N products and services. On faq.2n.cz you can find information regarding products adjustment and instructions for optimum use and procedures „What to do if...“.



Declaration of Conformity

2N TELEKOMUNIKACE a.s. hereby declares that the 2N[®] StarGate product complies with all basic requirements and other relevant provisions of the 1999/5/EC directive. For the full wording of the Declaration of Conformity see the CD-ROM enclosed and at www.2n.cz.



The 2N TELEKOMUNIKACE company is a holder of the ISO 9001:2000 certificate. All development, production and distribution processes of the company are managed by this standard and guarantee a high quality and advanced technical level of and a professional approach to all of our products.

Table of Contents

1. Product Overview.....	7
1.1 Product Description	8
2N [®] VoiceBlue Next Basic Features	8
1.2 Safety Precautions	9
1.3 Firmware Upgrade.....	10
1.4 Terms and Symbols Used	11
Symbols in Manual	11
Future Functions, Innovations	11
2. Description and Installation.....	13
2.1 Before You Start	14
Product Completeness Check.....	14
Connector Lay-Out (2-Channel Version).....	14
Connector Lay-Out (4-Channel Version).....	15
Status LED Indicators.....	15
SIM Card Placement (2-Channel Version).....	16
SIM Card Placement (4-Channel Version).....	17
Licences	17
GSM/UMTS Network Restriction.....	18
Potential GSM/UMTS Troubles	18
2.2 Factory Settings	19
2.3 Brief Installation Guide	20
SIM Card Inserting/Removing	20
Installation Conditions	20
Wall Mounting (2-Channel Version)	22
Horizontal Mounting (4-Chanel Version)	22
System Rack Mounting (4-Channel Version).....	23
Power Supply Connection	25
Antenna Connection	26
Ethernet Cable Connection	26
Antenna Splitter	27
Licence Restrictions	27
Firmware Upgrade.....	27
2.4 IP Voice Transmission	29
Speech Encoding Methods	29
SIP Components	30
SIP Signalling Messages.....	30
2.5 2N[®] VoiceBlue Next Connection to VoIP.....	32
SIP / H.323 Interconnection	32
Point-to-Point Configuration	32

Point-to-Multipoint Configuration	33
3. 2N[®] VoiceBlue Next Configuration	35
3.1 Factory Reset.....	36
3.2 Basic Configuration – Step by Step	37
3.3 Call Routing	39
Mobility Extension	39
LCR Table	40
Routing Algorithm for Outgoing Calls.....	41
Routing Algorithm for Incoming Calls.....	42
DISA Welcome Note	44
3.4 Web Configuration Interface	45
Essential Data	45
Login.....	45
Web Icons.....	46
Home Page.....	46
Gateway	47
Utils.....	64
Update	65
Restart	65
SIM client.....	65
4. Terminal	67
4.1 Terminal-Based Communication	68
Terminal.....	68
Access Data	68
4.2 AT Interface.....	69
Basic Commands	69
Configuration commands	70
4.3 LOGs.....	74
4.4 CDR.....	76
4.5 Available Status Messages	77
GSM Layer Statuses	77
Link Layer Statuses	78
Command Shell Statuses.....	78
Records of Events and Calls.....	79
4.6 Statistics.....	80
4.7 Tracing.....	82
4.8 External SMS Control.....	83

5. Technical Parameters	85
5.1 Technical Parameters	86
6. Supplementary Information	89
6.1 Regulations and Directives	90
6.2 Troubleshooting	91
6.3 List of Abbreviations.....	92
6.4 General Instructions and Cautions	94
Electric Waste and Used Battery Pack Handling	95

1

Product Overview

In this section, we introduce the **2N® VoiceBlue Next** product, outline its application options and highlight the advantages following from its use. This section also includes safety instructions.

Here is what you can find in this section:

- Product Description
- Safety Precautions
- Firmware Upgrade
- Terms and Symbols Used

1.1 Product Description

2N[®] VoiceBlue Next is a device that helps directly interconnect a SIP-supporting VoIP network with GSM networks and can be used for direct connection with a telephone set. The voice mode, i.e. outgoing and incoming calls, is the basic function of the gateway. 2N[®] VoiceBlue Next is equipped with all voice mode functions and provides the highest user comfort. In addition to voice transmission, 2N[®] VoiceBlue Next enables you to send and receive text messages (SMS). No additional equipment (such as an external phone) is needed for normal operation. You can use the web interface or AT commands for all the gateway settings. The programmable parameters are set in such a way that you can make calls the moment you connect the system to the Ethernet, connect an antenna and insert the SIM card. 2N[®] VoiceBlue Next can be combined with the 2N Mobility Extension service (remote GSM extension) for up to 8 users¹. 2N[®] VoiceBlue Next also provides connection to the 2N[®] SIM Star system².

2N[®] VoiceBlue Next Basic Features

- Compact size
- Two/four GSM/UMTS channels²
- System rack installation option²
- Intelligent incoming/outgoing call routing
- SMS sending/receiving (web, AT interfaces)
- User-friendly web interface
- Power over Ethernet (PoE)
- A single antenna for 1 or 2 GSM modules
- Automatic call records and detailed statistics
- 2N Mobility Extension support
- 2N[®] SIM Star support
- Possibility of SMS sending+receiving via web interface
- Tone detection

¹ Depending on the available licence type

² Depending on the part number

1.2 Safety Precautions

It is prohibited to use any transmitters, including the UMTS/GSM devices, in areas where explosives are used, such as quarries.

It is prohibited to use the GSM gateways at petrol stations where mobile telephones are also prohibited.

GSM phones may affect sensitive life-saving devices in medical centres. Therefore, it is forbidden to use GSM/UMTS devices, including the GSM gateways, in such facilities.

In general, any prohibition regarding mobile phones based on RF energy radiation applies to GSM/UMTS devices too.

If necessary, the GSM gateways may be installed at a safe distance from the prohibited area and connected with the original place through an Ethernet cable.

Although GSM gateways are not intended for cars or aeroplanes, all relevant prohibitions and regulations regarding mobile phones apply to them too.

1.3 Firmware Upgrade

The manufacturer reserves the right to modify the product in order to improve its qualities.

In response to the customers' requirements, the manufacturer constantly improves the software contained in the product (firmware). For the latest 2N[®] VoiceBlue Next firmware version and the User Manual refer to the 2N [web sites](#).

For a detailed description of the 2N[®] VoiceBlue Next firmware upgrade see the section devoted to the system installation.

Manual Version	Upgrade
1.1	■ The User Manual relates to the 2N [®] VoiceBlue Next firmware version 01-00-02 .
2.0	■ The User Manual relates to the 2N [®] VoiceBlue Next firmware version 01-00-04 .
3.0	■ New four-channel 2N [®] VoiceBlue Next version.

1.4 Terms and Symbols Used

Symbols in Manual



Safety Warning

- **Always** abide by this information to prevent injury of persons.



Warning

- **Always** abide by this information to prevent damage to the device.



Caution

- **Important information** for system functionality.



Tip

- Useful advice for quick and efficient functionality.



Note

- Routines or advice for efficient use of the device.

Future Functions, Innovations

The grey-marked text in this document designates the functions that are under preparation or development at present.

2

Description and Installation

This section describes the proper **2N® VoiceBlue Next** product installation and connection.

Here is what you can find in this section:

- Before You Start
- Factory Settings
- Brief Installation Guide
- IP Voice Transmission
- 2N® VoiceBlue Next Connection to VoIP

2.1 Before You Start



Caution

- Make sure that you are equipped with all system components necessary for putting 2N[®] VoiceBlue Next in operation (SIM card, VoIP phone and/or duly configured SIP line of your SIP Proxy, an available 100BaseT socket and a PC for initial settings).

Product Completeness Check

Before installing this product, check whether the 2N[®] VoiceBlue Next delivery complies with the following packing list. Be careful because there may be differences in the packing list depending on whether you have ordered a two-channel or four-channel version of the 2N[®] VoiceBlue Next product (different part numbers).

Package	2ch VBN	4ch VBN
2N [®] VoiceBlue Next	1	1
Power supply adapter	1	1
Short antenna	1	None
Long antenna	1	1
Ethernet cable	1	1
2N CD User Manual and SW	1	1
Wall-mounting set	1	None
SIM card cover including screws	1	None
Rubber feet	None	4

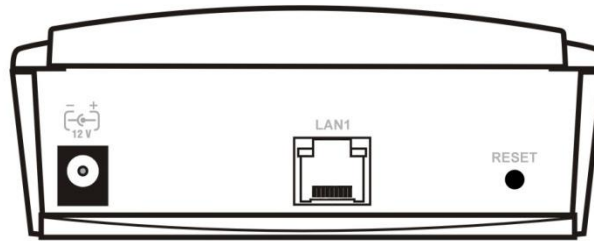
Connector Lay-Out (2-Channel Version)

The following connectors are mounted on the 2N[®] VoiceBlue Next bottom:

Power supply connector – DC jack 2.1mm

10/100BaseT Ethernet connector

RESET button – press for a short time to restart the GSM gateway and for a long time to restart the GSM gateway and download the factory settings.



Connector Lay-Out (4-Channel Version)

The following connectors are mounted on the 2N[®] VoiceBlue Next bottom:

- 10/100BaseT Ethernet connector with PoE support
- RESET button – press for a short time to restart the GSM gateway and for a long time to restart the GSM gateway and download the factory settings.
- Antenna connector for all GSM/UMTS channels
- SIM holder

Find a power supply connector (DC Jack 2.1mm) and type plates at the rear.

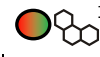


Status LED Indicators

The 2N[®] VoiceBlue Next states are indicated by LEDs on the front and system connector sides. For the LED types see the table below.

 **Power supply indicator**

Blue shining	Connected, correct function
Blue flashing	Device error
No light	Disconnected, malfunction

 **UMTS / GSM**

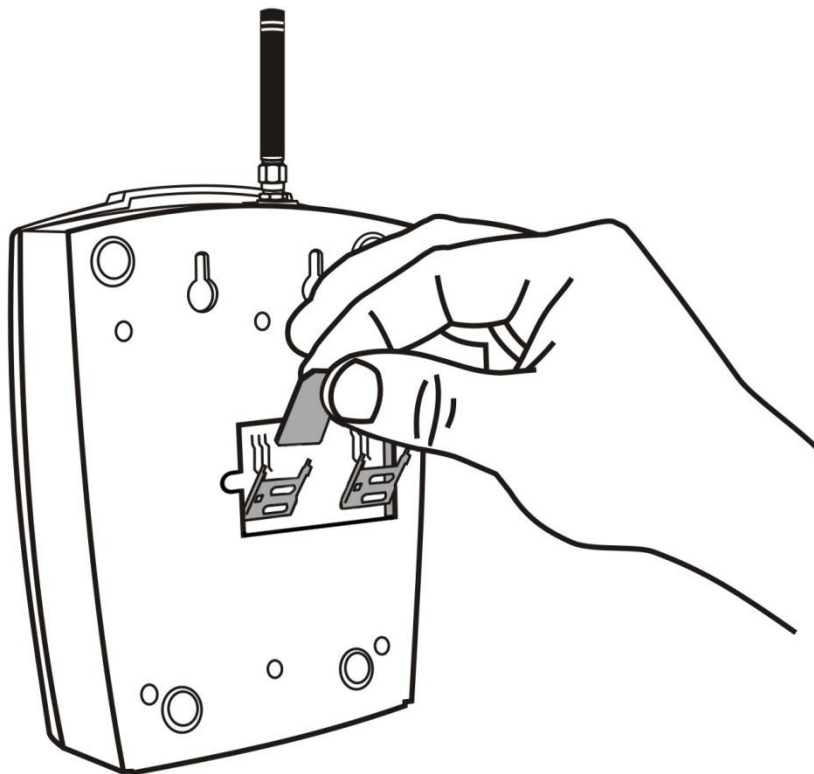
No light	Logged-in module, ready
Green shining	Active call
Green fast flashing	Module initialisation / communication
Green slow flashing	GSM/UMTS login process
Red shining	GSM module blocked /no SIM card
Red fast flashing	GSM module off
Orange shining	Initialisation upon GSM gateway power up

LAN

Green shining / Orange not shining	100BaseT Ethernet disconnected, no operation
Green shining / Orange flashing	100BaseT Ethernet connected, network operation
Green not shining / Orange shining	10BaseT Ethernet connected, no operation
Green flashing / Orange shining	10BaseT Ethernet connected, network operation

SIM Card Placement (2-Channel Version)

Lift off the SIM card holder on the 2N[®] VoiceBlue Next backside, insert the SIM card and replace the holder, securing the latch.



SIM Card Placement (4-Channel Version)

Insert a SIM card into one of the four SIM holders on the 2N[®] VoiceBlue Next front making sure that the chip contacts are at the front bottom. The SIM holders are equipped with the push&pull technology for facilitation.



Caution

- Remember to **set** call forwarding, call barring, preferential network(s), SMS centre and similar provider and SIM card services in your mobile phone **before inserting the SIM card** in 2N[®] VoiceBlue Next.
- If two SIM cards are used, both of them **must have an identical PIN**, or **PIN request disable** must be selected.
- **Disconnect** 2N[®] VoiceBlue Next **from the power supply** before inserting the SIM cards!

Licences

2N[®] VoiceBlue Next may contain time-limited software licences (SIP signalling, Mobility Extension, e.g.) that render services for limited hours only. Every gateway restart adds one hour to the internal licence counter. To check the current licence status, use the web interface of the gateway (refer to Subs. 3.4, p. 45), or the AT interface of the Telnet protocol (refer to S. 4, p. 67).

**Caution**

- A GSM gateway with an expired licence cannot process any incoming and/or outgoing calls! To avoid this, ask your dealer for licence prolongation or an unlimited licence!

GSM/UMTS Network Restriction

Some 2N[®] VoiceBlue Next types may be restricted to certain GSM/UMTS networks only. If so, the red indicator at the given GSM/UMTS module is on and the 'netw-err' cause is detected. Contact your dealer please for more information.

**Tip**

- Contact your dealer please for more information.

Potential GSM/UMTS Troubles

All 2N GSM gateways work reliably under a long-time full load. The following problems may be caused by GSM/UMTS networks:

- ◇ *GSM/UMTS module(s) cannot log in, log in slowly, or log out occasionally. This problem may be caused by any of the following situations:*
 - ◆ The GSM/UMTS signal is low. The minimum signal level should be approximately **-80dBm**. If lower, change the antenna position or type!
 - ◆ The GSM/UMTS cell (BTS) to which the GSM/UMTS modules are trying to log in is overloaded. Change the antenna position or reduce the count of the logged-in GSM/UMTS modules.
- ◇ *One of the GSM/UMTS modules is permanently logged-out or fails to make outgoing calls:*
 - ◆ The problem indicates a GSM/UMTS network overload on the installation site. To eliminate the problem, set the **Relax delay** parameter to **2 seconds** (refer to the **GSM Basic Parameters** subsection, p. 39). If the GSM module fails to log in or rejects to make outgoing GSM calls even after the gateway restart, consult your GSM provider for your SIM card/GSM module availability.

The manufacturer shall not be held liable for any SIM card or provider service unavailability in the case of a breach of the provider's SIM terms and conditions for the SIM card use.

2.2 Factory Settings

The table below includes the factory settings for the key configuration parameters of the GSM gateway:

Parameter	Value
IP address	192.168.1.2
IP mask	255.255.255.0
IP gateway	192.168.1.1
Username	Admin
Password	2n



Caution

- Remember to **change** the username and password **during** the first gateway configuration to avoid unauthorised access!

2.3 Brief Installation Guide

SIM Card Inserting/Removing

For the correct handling of SIM cards refer to the SIM Card Placement subsection on p. 16.



Caution

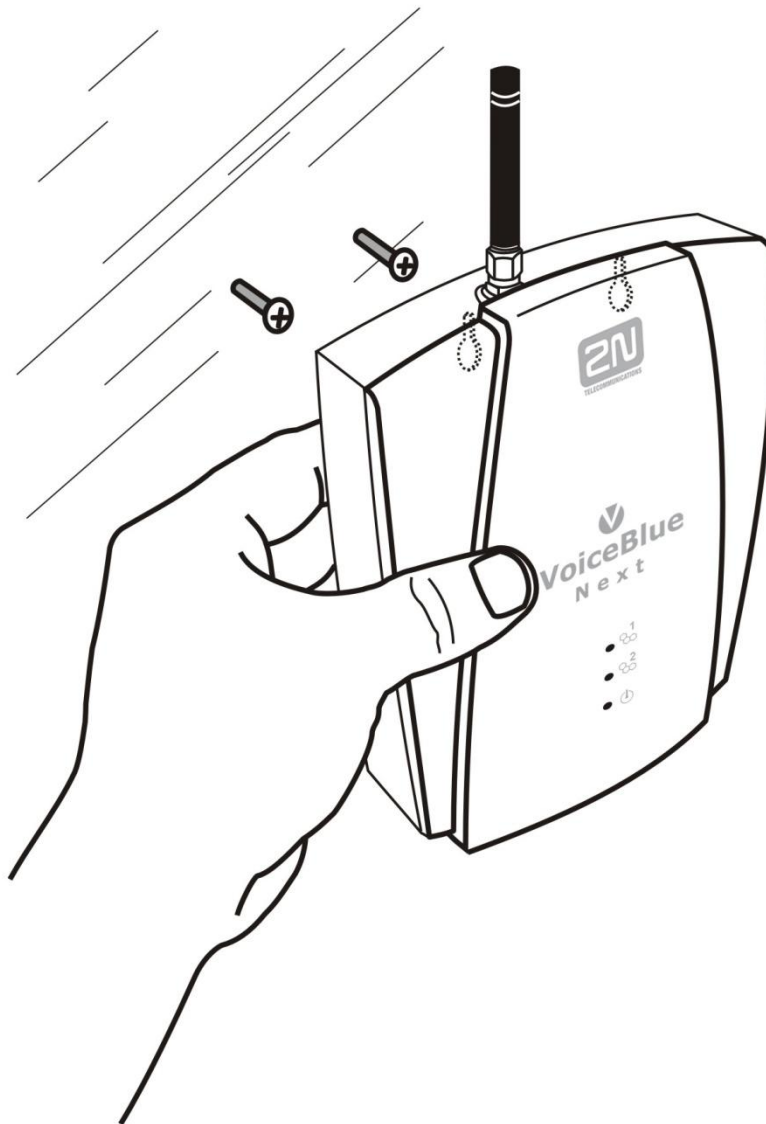
- Make sure that the GSM gateway is off before inserting and removing SIM cards to avoid the GSM/UMTS module damage.

Installation Conditions

The following installation conditions have to be met for proper installation:

- 2N[®] VoiceBlue Next is to be installed on a site with enough free space.
- 2N[®] VoiceBlue Next 2N[®] VoiceBlue Next can be mounted on a vertical surface (2-channel version), or on a horizontal surface or into a system rack (4-channel version). It is possible to operate 2N[®] VoiceBlue Next in another working position too, e.g. on a desk, for a short time for servicing and testing purposes, for example.
- Any excess of the allowed working temperature may not affect the 2N[®] VoiceBlue function immediately but may result in faster ageing and lower reliability. For the allowed working temperature and humidity ranges refer to S. 5, p. 85.
- 2N[®] VoiceBlue Next is not designed for high-vibration environments such as means of transport, machine rooms, and similar.
- 2N[®] VoiceBlue Next is not designed for dusty environments or places exposed to high humidity and temperature changes.
- 2N[®] VoiceBlue Next may not be exposed to aggressive gases, acid and solvent vapours, and so on.
- 2N[®] VoiceBlue Next is intended for indoor use. It may not be exposed to rain, flowing water, condensing moisture, fog, and so on.
- 2N[®] VoiceBlue Next may never be exposed to direct sunshine or placed close to heat sources (radiators).
- A sufficient clearance must be kept over and under 2N[®] VoiceBlue Next for cabling and air flow to carry off the heat.
- A sufficient GSM/UMTS signal intensity has to be provided for 2N[®] VoiceBlue Next.
- An adequate capacity of the GSM/UMTS network has to be ensured (no BTS overload). Remember that multiple GSM gateways used in one location may overload the base transceiver station (BTS) you are currently logged in to. This may lead to a permanent or occasional rejection of GSM/UMTS calls!

- No strong electromagnetic radiation is allowed on the 2N[®] VoiceBlue Next installation site.
- No strong electromagnetic reflections are allowed on the 2N[®] VoiceBlue Next antenna installation site.
- An inappropriate location of 2N[®] VoiceBlue Next or its antenna close to television, broadcasting and/or other rf-sensitive sets may impair the function of these sets.
- Being a source of radio frequency emissions, the 2N[®] VoiceBlue Next antenna should not occur in the close vicinity of the human body. The health hazard is higher than with mobile phones as, generally, gateways shared by multiple users show a very high traffic.
- Make sure that the VoIP connection has been configured properly according to the SIP and other VoIP recommendations.
- It is recommended that the power supply adapter should be connected to a network with a UPS back-up and due overvoltage protection.



Wall Mounting (2-Channel Version)

Follow the instructions below to wall mount 2N[®] VoiceBlue Next:

- 1) Drill two screws into the wall in a relative distance matching the wall mounting holes in the 2N[®] VoiceBlue Next rear. **The maximum screw head - wall distance is 5mm.**
- 2) Hang the 2N[®] VoiceBlue Next unit onto the pre-drilled screws.



Caution

- Do not open the GSM gateway during wall mounting to avoid product damage and subsequent warranty invalidation!
- The screw head - wall distance must allow for simple handling such as removing from the wall.

Horizontal Mounting (4-Chanel Version)

2N[®] VoiceBlue Next is ready for mounting on a horizontal support. You can stick rubber feet (included in the delivery) on the device if necessary. Follow the instructions below:

- 1) Put the GSM gateway carefully on a stable horizontal support with its bottom side up.
- 2) Stick the rubber feet into the corners as shown below.
- 3) Place the device on a stable horizontal support.



Caution

- Refer to the Proper Location subsection for correct placing!

System Rack Mounting (4-Channel Version)

2N® VoiceBlue Next can be mounted into a system rack. Purchase the rack accessories separately under Part No. **5051099E**. The accessory pack includes the following components:

Components	Pieces
Short wing	2
Long wing	1
Rear connecting plate	1
Upper connecting plate	1
Mounting screws	12
Rack screws	4

Single Mounting

Follow the instructions below to mount a single unit into a system rack:

- 1) Fit the rack wings to the right and left sides using four screws for each wing (included in the package). The positions of the long and short wings are optional and depend on the installation site conditions.



- 2) Having screwed the wings, place the GSM gateway into a free 1U place of the system rack fitting it with four rack screws (included in the package).



Pair Mounting

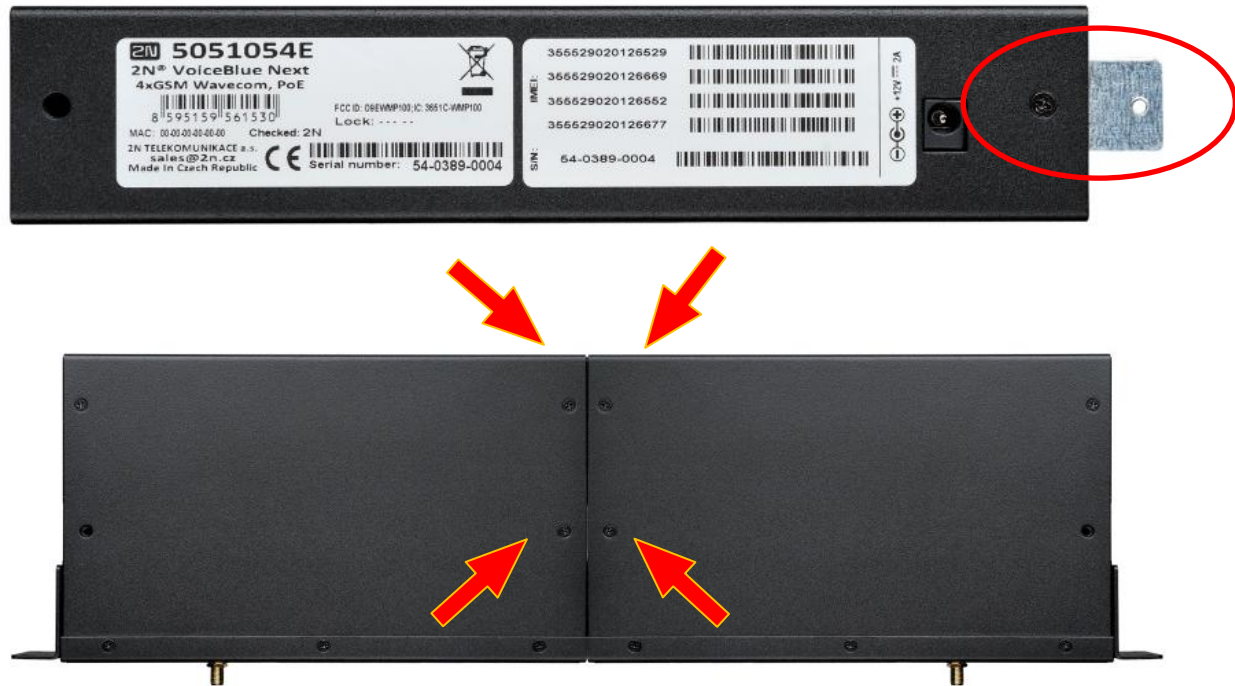
Follow the instructions below to rack mount two GSM gateways into one 1U place:

- 1) Put the GSM gateways next to each other making their sides touch each other. Fit the short wings (included in the package) onto the free gateway ends with the screws enclosed.



- 2) Insert the connecting plates (BE CAREFUL! The rear and upper connecting plates have different drilled holes – the upper plate holes are larger and without threading) in the upper and rear holes of one GSM gateway first. Then connect the other unit.





- 3) Place the GSM gateway pair into a free 1U place in the system rack and fit it with four rack screws (included in the package).



Caution

- The rear and upper connecting plates have different holes – the upper plate holes are larger and without threading.
- Make sure that the plate does not get into the device to avoid electric short-circuit inside the GSM gateway.
- Leave 2 cm free space at least over and under the GSM gateway for better ventilation (airflow)!

Power Supply Connection

Use only the power supply adapter included, or, with the power over Ethernet, a certified PoE adapter to feed the gateway. Make sure that the electric distribution network voltage is in compliance with the data on the supply adapter plate before plugging the adapter. First plug the supply adapter into the mains socket and only

then connect the adapter connector to the gateway. Refer to the status indicators on p. 15 above.



Warning

- Connecting a defective or inappropriate power supply adapter may lead to a temporary or permanent 2N[®] VoiceBlue Next error!
- Never connect 2N[®] VoiceBlue Next using the PoE and a local adapter at the same time to avoid permanent 2N[®] VoiceBlue Next malfunction!
- Check whether the antenna is connected before plugging the adapter.
Feeding the device without antenna connection may result in the GSM module transmitter damage.

Antenna Connection

2N[®] VoiceBlue Next is equipped with a SMA female antenna connector for all the GSM/UMTS modules. The external antenna should always be installed vertically on a site with a good wireless signal.



Warning

- Tighten the antenna **connector gently with your hand – never use a wrench!**
- Being a source of radio frequency emissions, the 2N[®] VoiceBlue Next antenna should not occur in the close vicinity of the human body. The **health hazard** is higher than with mobile phones as, generally, gateways shared by multiple users show a very high traffic.



Note

- The antenna has a sufficient gain for a trouble-free operation under normal conditions. If the signal is poor or you want to place your antenna separately from 2N[®] VoiceBlue Next, you can use an antenna with an SMA-connector terminated cable. The antenna should be mounted vertically.
- Refer to the **Technical Parameters** section for the antenna and cable parameters.

Ethernet Cable Connection

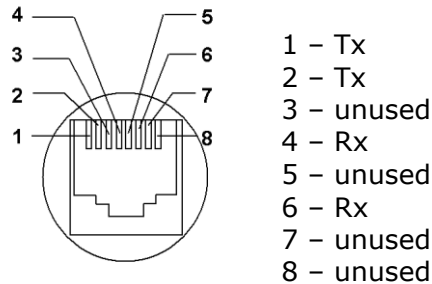
To connect 2N[®] VoiceBlue Next into an Ethernet network use a standard straight cable terminated with RJ-45 connectors (included in the package). The GSM gateway supports the 10BaseT and 100BaseT standards, the Ethernet connection status is indicated by the status LED indicators located on the RJ-45 connector (refer to p. 15 for details).

For the Ethernet interface factory settings for 2N[®] VoiceBlue Next refer to Subs. 2.2, p. 19.



Caution

- Resetting factory values results in a change of the 2N[®] VoiceBlue Next Ethernet interface configuration!
- Using a defective Ethernet cable may lead to a high packet loss rate in the Ethernet network and subsequent instability and poor quality of all GSM/UMTS calls!



RJ-45 connector for LAN connection

Antenna Splitter

The antenna splitter is a passive component that combines multiple GSM/UMTS channels into one antenna. In 2N[®] VoiceBlue Next, it combines two/four antennae into one. The antenna splitter is placed in the installation box. It is a passive element – it has a characteristic signal attenuation value that the antenna connected must compensate. No antenna splitter is used for one-channel 2N[®] VoiceBlue Next gateways.

Licence Restrictions

2N[®] VoiceBlue Next may contain time limited software licences. See p. 17 for more information.

Firmware Upgrade

Please upgrade the 2N[®] VoiceBlue Next firmware before installing the system. Check the www.2N.cz web sites for the latest firmware for this gateway type.



Warning

- Use the **firmware certified** for this gateway type only! Any other firmware type may **damage** 2N[®] VoiceBlue Next **irreversibly**!

Follow the instructions below to download firmware easily using the gateway web interface:

- Connect your PC and the gateway into the Ethernet network.
- Open the web browser (MS Internet Explorer 9 and higher or Mozilla Firefox 4 and higher are recommended).
- Enter the http://IP_address to register at the web interface.
- Click on **Upgrade**, then on **Browse** and select the new firmware file.
- Click on the **Download firmware** icon in the lower part of the web page.
- 2N[®] VoiceBlue Next will upgrade the firmware automatically.

2.4 IP Voice Transmission

Speech Encoding Methods

Voice transmission is strictly separated from signalling in VoIP networks. Modern VoIP networks mostly use the RTP (Realtime Transport Protocol) for voice transmission. The purpose of the RTP is only to transmit data (voice) from a source to a destination at real time.

Codecs are used to save the channel data capacity. Codecs process the voice signal using variable algorithms to minimise the volume of user data. The degree of compression used by the codec affects the quality of voice transmission. Thus, the better voice transmission is required, the wider data range (the higher transmission rate) is needed. The MOS (Mean Opinion Score) scale is used for rating voice transmission quality, where 1 means the worst and 5 the best quality. For a survey of the codecs supported by 2N[®] VoiceBlue Next refer to the table below.

Codecs supported			
Standard	Algorithm	Transmission rate [kbps]	MOS
G.711a	PCM	64	4.1
G.711u	PCM	64	4.1
G.729 ³	CS-ACELP	8	3.92

For 2N[®] VoiceBlue Next, quadruple the above mentioned rates (two fully duplex calls) and add the TCP and IP header transmission rate to the result to get the resultant transmission rate.

It is important to keep both a stable appropriate transmission rate during connection and a small and identical transmission time per data packet in order to maintain a high-quality voice transmission.

- G.711 – this codec is used in digital telephone networks. The PCM (Pulse Code Modulation) is used for voice signal encoding. The sampled signal is encoded in 12 bits and then compressed using a non-linear scheme into the resultant 8 bits. Europe uses the A-law compression system while North America and Japan obey the μ -law. The resultant data flow is 64 kbps.
- G.729 – this codec uses the CS-ACELP (Conjugate-Structure Algebraic-Code-Excited Linear-Prediction) algorithm with the resultant transmission rate of 8 kbps. The speech signal is split into blocks of 10 ms each. The parameters of these blocks are then inserted in frames of the size of 10 bytes. 2-byte frames are generated for noise transmission.

During call set-up, a codec is selected automatically for voice transmission. 2N[®] VoiceBlue Next supports the codecs included in the table above. The type of codec to be used depends on your VoIP network (individual devices) and your 2N[®] VoiceBlue Next configuration. 2N[®] VoiceBlue Next is designed primarily for VoIP corporate networks and tries to meet the opponent's codec requirements. If a codec is requested that is incompatible with 2N[®] VoiceBlue Next, the call will be rejected.

³ G.729 is an optional part of the system.

The SIP and ITU-T H.323 recommended protocols are mostly used for connection establishing, maintaining and cancelling. 2N[®] VoiceBlue Next uses the **SIP** (Session Initiation Protocol) signalling.

**Tip**

- In the case of separated direct connection of your SIP Proxy and 2N[®] VoiceBlue Next, use the G.711 codec to achieve a high voice quality.

SIP Components

The following components are involved in the SIP message exchange:

- UAC (User Agent Client) – the terminal device client, which initiates SIP signalling.
- UAS (User Agent Server) – the terminal device server, which responds to SIP signalling from the UAC.
- UA (User Agent) – a SIP network terminal (SIP phones, gateways to other networks, etc.), which contains the UAC and UAS.
- Proxy server – receives connection requests from the UA and transfers them to the next Proxy server if the given station is not under its administration.
- Redirect server – receives connection requests, but, instead of sending them to the called line, sends them back to the requesting device asking for where to route the request.
- Location server – receives registration requests from the UA and updates the terminal database accordingly.

All the server components (Proxy, Redirect, Location) are mostly on one physical device called Proxy server, which is responsible for keeping a client database and connection establishing, maintaining and terminating, as well as call routing.

The 2N[®] VoiceBlue Next VoIP-GSM gateway acts as a UA in any case (has the same functions as a VoIP phone), i.e. receives call set-up requirements and, on the basis of its inner LCR table, routes calls to GSM networks.

None of the SIP-defined server components are integrated in the 2N[®] VoiceBlue Next gateway.

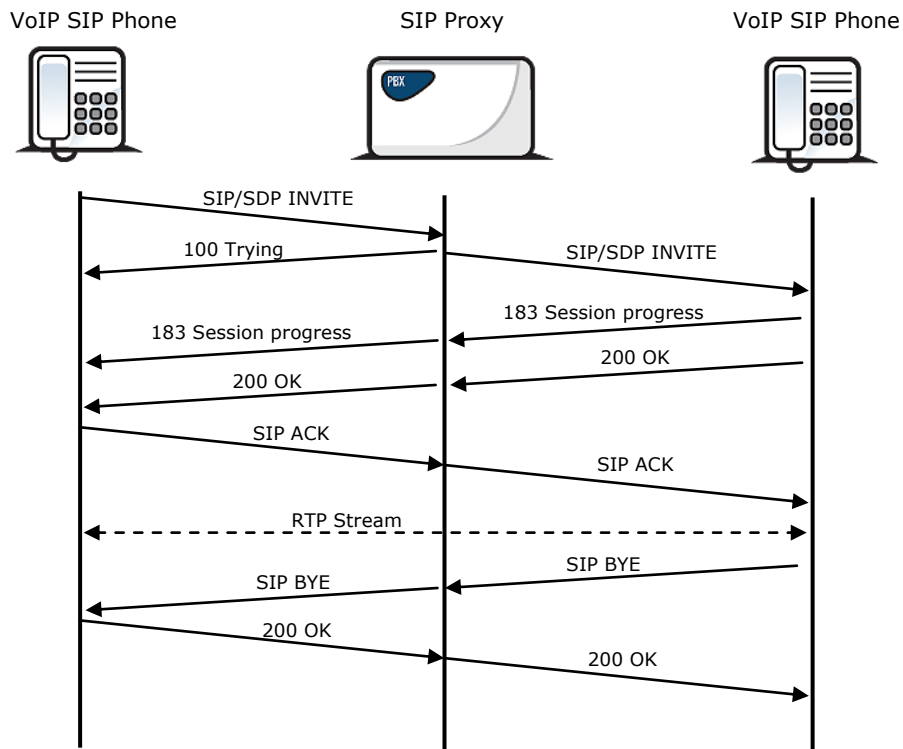
SIP Signalling Messages

Below is a list of messages sent via the SIP:

- ◆ INVITE – connection set-up request;
- ◆ ACK – INVITE confirmation by the final message addressee;
- ◆ BYE – connection termination;
- ◆ CANCEL – failed connection cancellation;
- ◆ REGISTER – UA registration with the SIP Proxy;
- ◆ OPTIONS – server capability query.

The answers to the SIP messages are numerically coded as the case is with the http protocol. Below are the most important ones:

- ◆ 1XX – information messages (100 – trying, 180 – ringing, 183 – progress);
- ◆ 2XX – successful request completion (200 – OK);
- ◆ 3XX – request forwarding needed (302 – temporarily moved, 305 – use Proxy);
- ◆ 4XX – error (403 – forbidden, 486 – busy here);
- ◆ 5XX – server error (500 – Server Internal Error, 501 – not implemented);
- ◆ 6XX – global failure (606 – not acceptable).



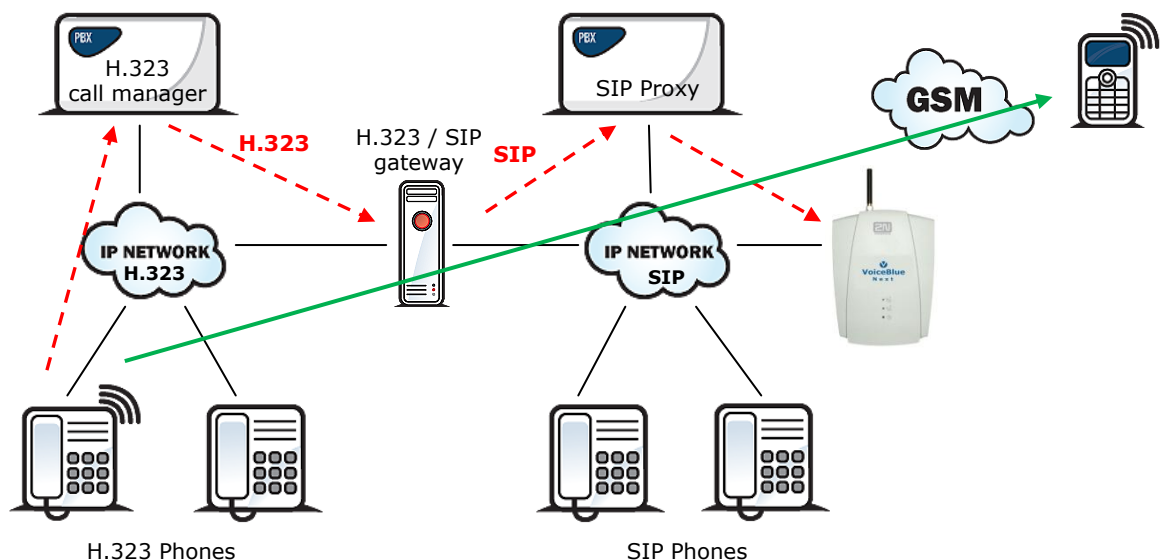
SIP Message Sending during Call Set-up and Cancellation

2.5 2N® VoiceBlue Next Connection to VoIP

Since 2N® VoiceBlue Next communicates using the SIP only, this subsection outlines solutions for its interconnection with networks working with the H.323 signalling protocols. 2N® VoiceBlue Next can be used either in the Point-to-Point or Point-to-Multipoint mode with the SIP Proxy server.

SIP / H.323 Interconnection

SIP-based devices cannot communicate with H.323 supporting devices directly, but through a SIP/H.323 gateway. This gateway transfers signalling messages from/to the protocols. Using the RTP for multimedia data transmission, the SIP and H.323 protocols can go on communicating directly when the SIP/H.323 gateway connection is established. Thus, the SIP/H.323 gateway helps integrate 2N® VoiceBlue Next into the existing H.323 environment.



Point-to-Point Configuration

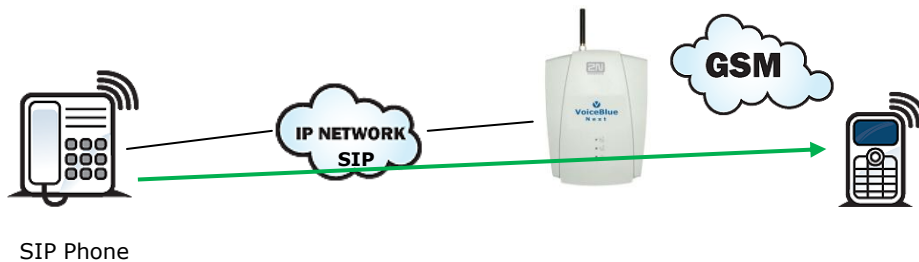
2N® VoiceBlue Next can communicate with just one SIP VoIP phone or device (a VoIP gateway, e.g.) in the PTP (Point-to-Point) mode. The IP address of the opposite party is always selected as the Proxy server IP address in 2N® VoiceBlue Next for this mode.

The 2N® VoiceBlue Next PTP configuration is often used for testing purposes before implementation into the VoIP network. Refer to the figure below for the PTP scheme.



Tip

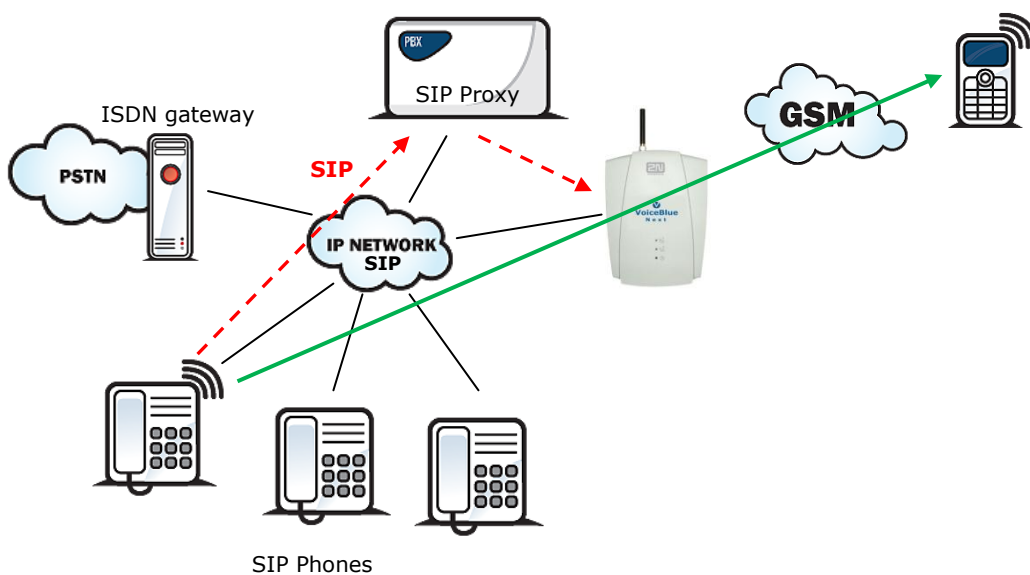
- If you set the incoming SIP Proxy IP address to '0.0.0.0' in the 2N® VoiceBlue Next configuration, the GSM gateway will receive calls from any VoIP device.



All calls outbound to GSM are routed to the 2N® VoiceBlue Next gateway in the Point-to-Point mode that uses 2N® VoiceBlue Next.

Point-to-Multipoint Configuration

Point-to-Multipoint is a classical scheme of a distributed VoIP network with one or more SIP Proxy servers (VoIP gateway). The SIP Proxy server is a software PBX (or a standard PBX extended with VoIP services), which is responsible for all VoIP signalling. Multiple source devices (VoIP phones, e.g.) and multiple target devices (2N® VoiceBlue Next, e.g.) can be used in this mode. An internal routing algorithm (Least Cost Router, LCR) of your SIP Proxy is used for routing outgoing GSM and other calls in this mode. Calls to GSM networks can be routed via the 2N® VoiceBlue Next gateways. All SIP signalling is governed by the SIP Proxy server and the subsequent voice stream is based on the Point-to-Point RTP.



3

2N[®] VoiceBlue Next Configuration

This section describes the **2N[®] VoiceBlue Next** configuration.

Here is what you can find in this section:

- Factory Reset
- Basic Configuration – Step by Step
- Call Routing
- Web Configuration Interface

3.1 Factory Reset

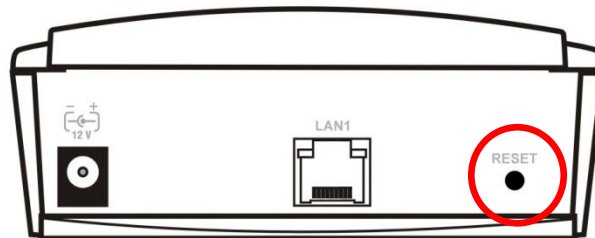
If you forget the password or set the IP interface incorrectly, you can press the RESET button to the right of the RJ45 Ethernet connector for a long time.

Doing this, you restore the factory default configuration values for all parameters, including the Ethernet interface parameters and access data. Refer to Subs. 2.2, p. 19 for factory settings.



Caution

- Resetting the factory configuration values results in changes of the Ethernet settings and subsequent necessity to reconfigure the gateway.



Note

- Push the RESET button for a short time (0.5 s) to restart the GSM gateway.

3.2 Basic Configuration – Step by Step

This section will help put your 2N[®] VoiceBlue Next gateway in operation for the first time. Refer to all S. 3 subsections for detailed settings.

- Install the GSM gateway as instructed in Subs. 2.3. Before the first start, remove the SIM cards, or insert the SIM cards with the PIN request disable.
- Connect the GSM gateway to the Ethernet network to enable connection to the address mentioned in Subs. 2.2, p. 19 from the configuration terminal. If the gateway default IP address is not suitable for your Ethernet installation, reset the IP address as follows:
 - Disconnect the configuration terminal from the Ethernet network.
 - Disconnect the GSM gateway from the Ethernet network.
 - Prepare the Ethernet switches, or an Ethernet crossed cable.
 - With the Ethernet crossed cable, interconnect the configuration terminal with the GSM gateway directly.
 - With the Ethernet switch, connect the configuration terminal and GSM gateway to the pre-prepared Ethernet switch. We do not recommend connecting any other equipment.
 - Change the Ethernet IP setting in the configuration terminal, e.g.: IP=192.168.1.200, Net Mask: 255.255.255.0.
 - Open your web browser and enter the GSM gateway IP address.
 - Enter the factory login data.
 - Change the required settings in the **Gateway configuration, Ethernet configuration** menu and store the data into the GSM gateway.
 - Connect the GSM gateway to a standard Ethernet network.
 - Restore the configuration terminal IP setting and connect the configuration terminal to a standard Ethernet network.
- Enter the new GSM gateway IP address to get connected to the web interface.
- Enter the current time and date in the **Gateway control, Date/Time** menu for the GSM gateway.
- Make sure that the **Licence status** item is **unlocked** in the **Gateway control, Firmware/Licence** menu. If not, your GSM gateway does not contain the licence. Contact your dealer for the licence key.
- Set the correct PIN value in the **Gateway configuration, System parameters** menu. The value must comply with the SIM card PIN value.
- Set new login data in the **Gateway configuration, Login configuration** menu.
- Switch the GSM gateway off and insert the SIM cards. Connect an antenna to the GSM gateway and switch it on.
- The GSM gateway contains the factory configuration settings that enable outgoing calls without additional settings. Now enter the IP address equal to the GSM gateway IP address on your SIP Proxy or IP terminal.

From now on, 2N® VoiceBlue Next will be ready to receive VoIP-SIP calls and route them to GSM/UMTS networks. If all the GSM modules are occupied, or logged out, the GSM gateway will reject all VoIP-IP and GSM/UMTS calls.

Should you get in troubles, follow the steps below please:

- Read the User Manual carefully and check all parameters.
- Find answers to the frequently asked questions at <http://faq.2n.cz>.
- Consult your servicing partner.

You are recommended to attend a 2N certified training to improve your installation chances.

3.3 Call Routing

Calls from a VoIP port to a GSM/UMTS network are routed to any GSM/UMTS port according to the LCR (Least Cost Routing) table. If an incoming call is routed via a busy port, other ports are checked automatically for availability (depending on the configuration) and in case no allowed outgoing port is available, the outgoing call is rejected.

The LCR algorithm identifies the outgoing call type, current time tariff rate, day in a week, and/or free minutes of GSM providers and routes outgoing calls accordingly.

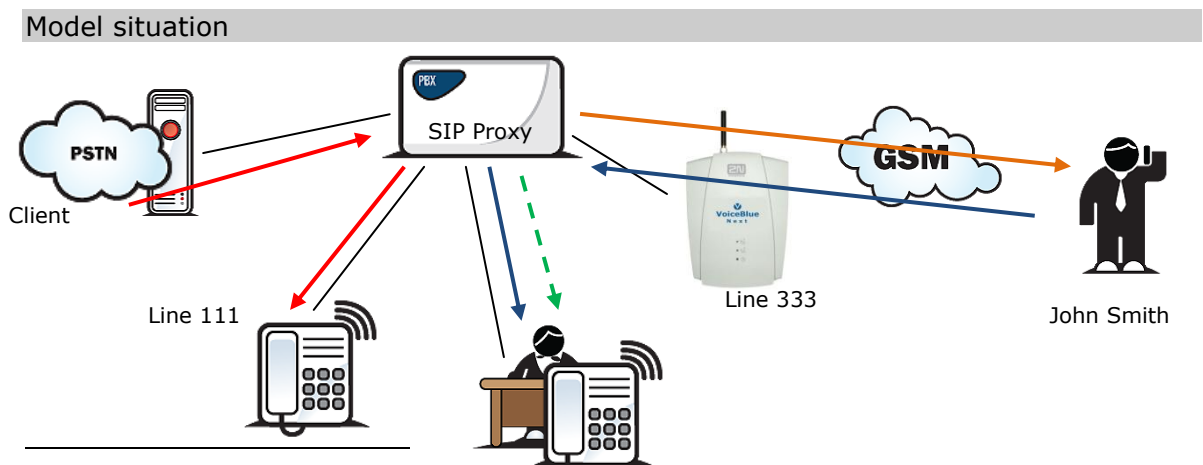
Incoming calls from GSM networks are routed directly to the defined SIP address, or the DISA function is activated. Furthermore, calls can be routed according to the CLIP (caller's telephone number). And the CallBack service is also available.

Mobility Extension

Mobility Extension (ME) is a function that turns your mobile phone into a fixed office line and thus helps you take advantage of all PBX functions.

Advantages:

- ◆ You never miss any important call as you are available at all times.
- ◆ You can get information SMS messages on missed calls.
- ◆ You can control your company PBX call forwarding services from your mobile phone.
- ◆ You can make use of a comfortable DTMF code control.
- ◆ You need not make complicated forwarding actions as the function is fully automatic.
- ◆ ME can work with any SIP Proxy PBX.
- ◆ ME can replace any standard VoIP phone.
- ◆ Calls to your mobile phone are free of charge or at a moderate cost⁴.
- ◆ You need not integrate a costly DECT system any longer.



⁴ In case the VPN service is activated by your provider for the GSM gateway and your mobile SIM cards.

Line 222

Model situation description:

A client is calling Mr. Green at 2N from his or her fixed line. According to the company PBX configuration, all calls to line 111 (Green's office phone) automatically alert line 333 too (red arrows). Suppose Mr. Green is on a business trip. The GSM gateway automatically forwards the call to Mr. Green's mobile number (orange arrow).

Mr. Green answers the call on his mobile phone. If the client wants to appoint a meeting, Mr. Green parks the active call using a DTMF code and calls (blue arrows) line 222 to get through to his secretary's extension. Having agreed with the secretary, Mr. Green transfers the parked call to the secretary and hangs up his mobile phone (green arrow).

**Tip**

- In case the gateway – mobile phone connection is unsuccessful, the PBX can send an SMS message including the calling number.

Correct ME configuration:

- ◆ Connect the GSM gateway to your PBX/SIP Proxy.
- ◆ Check whether the Mobility Extension licence key has been entered correctly.
- ◆ Enter another prefix in **Gateway configuration, Prefixes** menu that matches the MSN to which the PBX/SIP Proxy is calling (e.g. 333 as shown in the figure above).
- ◆ Enter all ME users in the **Gateway configuration, Mobility Extension** menu.

LCR Table

The LCR (Least Cost Routing) table is the key telephone cost cutting factor. It helps you select call routes according to the called subscriber's number and the day time and weekdays. By adding bank holidays to the LCR table you achieve even higher call cost savings.

To make your prefix and LCR routing work properly, enter the prefix and the total count of digits for the number to be dialled to a GSM/UMTS network in the **List of networks**. Furthermore, make sure that the SIM card of the provider consistent with the defined group has been inserted in the GSM gateway. Use the **Assignment to GSM groups** table to assign outgoing and incoming calls to groups.

Whenever a call is to be set up, the LCR table is searched sequentially from top to bottom. If the called destination prefix matches the network prefix included in the **List of networks** table (and designated as **Network number** in the LCR table), the call is routed according to the routing group parameters (**Groups** in the LCR table) as set in the **GSM outgoing groups** table. The call will be connected via the GSM module as assigned to the **GSM outgoing group** in the **Assignment to GSM groups** table.

If the selected GSM/UMTS module is busy, the call is routed according to the next routing rule in the **Groups** as defined by the **GSM outgoing groups** table. Again, the

GSM outgoing group is assigned to a GSM module in the **Assignment to GSM groups** table.

The LCR row is checked in this way until a free GSM/UMTS module is found. If no available GSM/UMTS module (**GSM outgoing groups**) is found, the call is rejected.

Routing Algorithm for Outgoing Calls

The GSM/UMTS outgoing call routing algorithm is launched whenever the SIP Proxy routes an outgoing call to 2N[®] VoiceBlue Next. Outgoing calls are routed via 2N[®] VoiceBlue Next as follows:

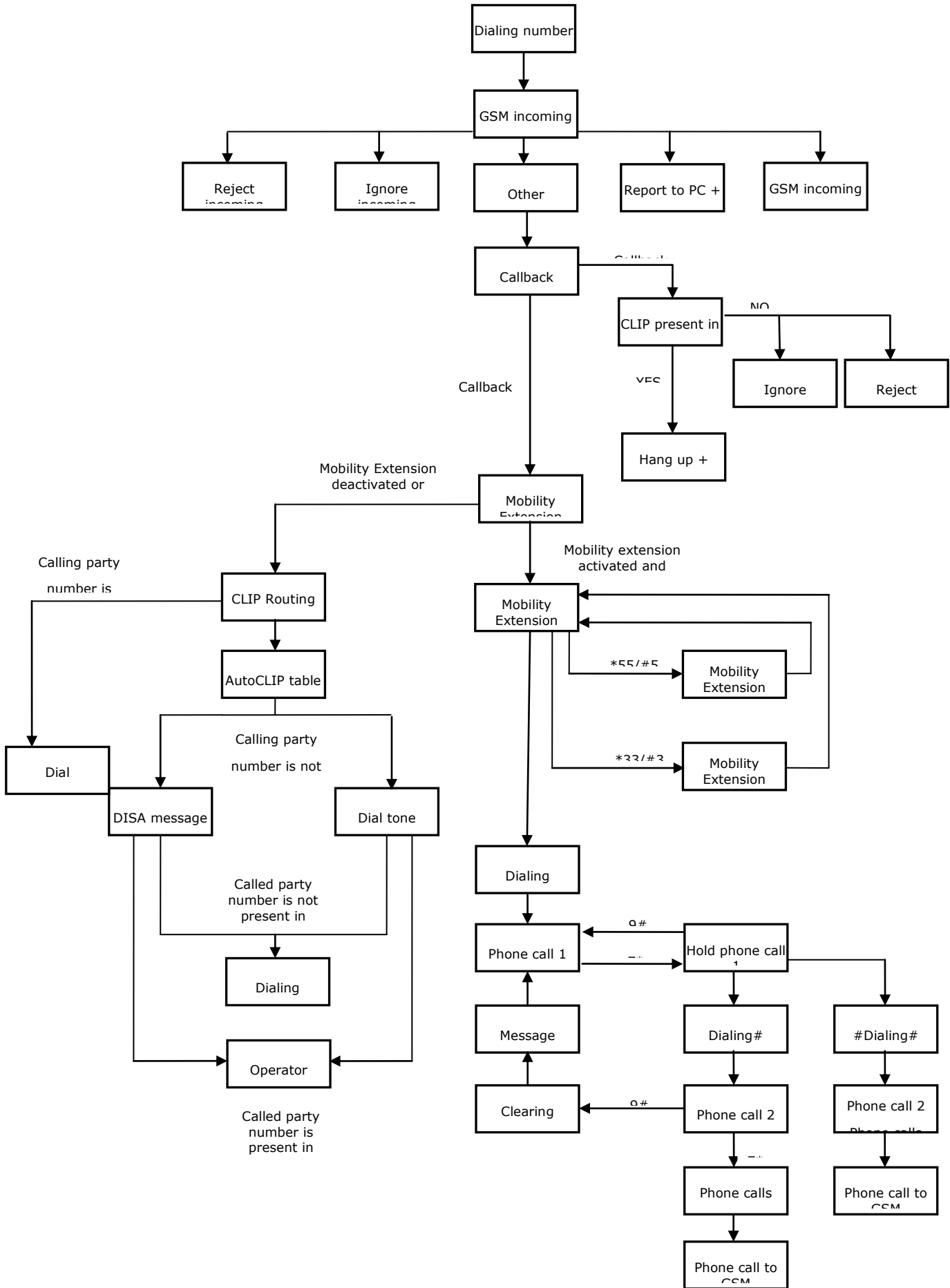
- The calling subscriber dials the subscriber number and the SIP Proxy routes it to 2N[®] VoiceBlue Next depending on the SIP Proxy settings.
- The number prefix is checked against the prefixes in the **List of networks** tables in the ascending sequence, i.e. table 1 is searched first, followed by table 2 and so on.
- When a matching prefix is found in a **List of networks**, the LCR is checked for a valid row. Again, the LCR is searched upwardly, starting from the first row.
- If a **List of networks** number matches a valid number on the respective row, the call time is checked against the routing rule. If no match is found, the next LCR row is checked.
- If the **List of networks** number and call time meet the routing rules, the call is routed to the module selected in the **Assignment to GSM groups** table according to the first routing rule included in the **Groups** section and given in the **GSM outgoing groups** table.
- Moreover, call duration limiting timer can be selected for the outgoing call.
- If the selected GSM/UMTS module is occupied or has a low credit, the algorithm returns to the preceding step but considers the next **Groups** row instead of the first one. If no record is found in this section, the next LCR row is used.
- If the selected GSM/UMTS module is available and has a sufficient credit, the GSM gateway will start dialling the GSM number.
- If the calling subscriber number has an unknown prefix or all routes are occupied, 2N[®] VoiceBlue Next rejects the connection request.
- The outgoing call is not billed until the called party answers the call.
- The GSM network signals the call answering moment and the GSM gateway transfers this information to the SIP Proxy.
- It can be set for GSM outgoing calls that the calling subscriber should be sent the connection tone* instead of a silence between the request sending to GSM and the ringing tone.

* This option can be activated for TC35i modules.

Routing Algorithm for Incoming Calls

Incoming calls are processed according to the **Mode** parameter setting in the **GSM incoming groups** table. The following options are available:

- **Reject/ Ignore incoming calls** – incoming calls are not routed to the VoIP network. On the GSM side, the connection request is either rejected or ignored (the caller hears the check ringing tone).
- If the above mentioned option is not selected, the CLIP routing table is checked. If the calling number is found, it is checked for CallBack first. If the CallBack function is enabled for this number, 2N[®] VoiceBlue Next will ignore the incoming call and set up a CallBack to GSM after the caller hangs up. If the AutoDial function is enabled for the calling number, the caller will be routed directly to the extension number entered in the AutoDial item. If both the CallBack and AutoDial functions are activated, 2N[®] VoiceBlue Next will ignore the incoming call and set up a call to GSM after the caller hangs up. Simultaneously, a call to the VoIP extension will be set up and then the calls will be connected. If the CallBack function is enabled and the caller fails to hang up within 10 s, 2N[®] VoiceBlue Next will try to set up a call according to the AutoDial settings.
- In case the CLIP routing function is disabled or the calling number is not included in the CLIP routing table, the Dynamic CLIP routing table is checked. If the calling number is found, the incoming call is routed directly to the corresponding extension. To set the Dynamic CLIP routing function use the **GSM incoming groups** menu.
- If the incoming call is still not processed, the gateway will receive the call and send either a voice message or the dialtone to the caller. After that, 2N[®] VoiceBlue Next awaits the required count of digits necessary for connection set-up. Set the minimum and maximum counts of DTMF digits in the **GSM incoming groups** menu.
- If 2N[®] VoiceBlue Next does not receive the minimum count of digits and no other digit comes within the timeout set in the **DTMF dialling timeout** parameter, the call is forwarded to the operator as if the called extension number were unknown.
- If call forwarding to the operator is inactive, the incoming call will be rejected.



DISA Welcome Note

If the DISA service is active and a welcome note has been recorded, the welcome note is played to every incoming call whose number is not included in the CLIP table or forwarded according to the Dynamic CLIP routing table. When the welcome note has been played, the gateway waits for the first DTMF digit for the period set in the **GSM incoming groups - DTMF dialling timeout** table. Having received the count of digits included in the **GSM incoming groups Minimum count of DTMF digits** table, the gateway will set up connection to the SIP Proxy. Use the GSM gateway web interface to record the DISA welcome note.

3.4 Web Configuration Interface

Essential Data

The 2N[®] VoiceBlue Next web interface supports the following web browsers:

[MS Internet Explorer v9](#)

[Mozilla Firefox v4 and higher](#)

Any other web browsers may cause troubles. The recommended screen resolution is 1280x1024 and colour quality 32bit or higher. The configuration interface is available in the English language version only at present.



Tip

- Use the F11 key to activate the full-screen mode for better resolution.

Login

For login to the 2N[®] VoiceBlue Next web configuration interface, enter the server IP address into your web browser. The following login dialogue will get displayed.



Just one user may be logged in at a time. Refer to Subs. 2.2, p. 19 for details on the login factory settings.



Tip

- The user limitation applies to the web interface access only. The access to the Telnet interface is limited to ten simultaneous users.

Auto logout in 170 seconds (**Refresh**)

A three-minute⁵ login timeout is set automatically and recovered automatically upon every user activity on the web interface. After this timeout, the current user is logged out automatically. Click on the **Refresh** button to reset the maximum timeout value.







⁵ Set the login timeout value in the **Gateway-Web configuration-Auto logout** section.



Caution

- You are recommended to change the initial login data upon your first login to considerably increase your system security.

Web Icons

Icon	Description
	Reset factory values
	Store current configuration into GSM gateway
	Restore previous GSM gateway configuration values
	Save onto local disk of connected terminal
	Refresh display data
	Confirmation (e.g. of configuration file storing to GSM gateway)



Caution

- Push the **Save settings** button to save the changes. Otherwise you will **lose** the configuration changes after quitting the current configuration window!

Home Page

Having logged in, you get to the **Gateway** home page as shown in the figure below. There is a menu on the left, which includes the Gateway control and Gateway configuration items. The right-hand upper corner displays the current state of the login timer and the **Refresh** button for automatic time limit refreshing.

The home page also includes the **Logout** button. You will be notified of successful logout after every logout action to avoid re-use of your login data.

There are four more sections in the right-hand upper menu:

- **Update** for firmware update

- **Restart** for software restart of the GSM gateway.
- **SIM client** for gateway settings for connection to the 2N[®] SIM Star system.
- **SMS** for receiving/sending SMS via the web interface.
- **Utils** including extending system tools (Ethernet tracing).

The main window displays information on the gateway licence status, firmware and bootware versions and the 2N[®] VoiceBlue Next Ethernet interface MAC address. In addition, you can download a new licence here.

The screenshot shows the '2N[®] VoiceBlue Next Gateway' web interface. At the top right, it says 'Auto logout in 270 seconds (Refresh)'. The main content area is titled 'Firmware/Licence' and is divided into three sections:

- Firmware:**
 - Firmware version: 01.00.04rc3
 - Bootware version: 00.92
 - MAC address: 7C-1E-B3-00-0E-6C
- Information for gateway licence:**
 - Serial number: M201-5401230039
 - Active: SIP ME8
 - Gateway limitation: 93 hours (no limit)
 - Licence status: Unlocked
 - Networks: (all)
- Gateway licence change:**
 - Licence key for gateway:
 - Warning: It will cause gateway restart!

On the left side, there is a navigation menu with categories: Gateway control (including Firmware/Licence, Date/Time, Voice Messages, LOG file, CDR file, Statistics, Current call info, AutoCLIP routing table, Modules status, Module control, Connection state, SIP registration, Online report), Gateway configuration, and Configuration backup. At the bottom left, there is a 'Logout' button with a help icon. At the bottom right, there is a checkmark icon.

Gateway

The **Gateway** section is divided into two functional groups:

Gateway Control

This group helps:

- Monitor the current statuses of the GSM gateway components;
- Check and set the GSM gateway licence;
- View and save LOG files and CDR.

Firmware / Licence

This window provides information on the gateway licensing, firmware and bootware versions and Ethernet interface MAC address. A new licence code can be inserted here.

- Firmware version - current firmware version of the gateway connected.
- Bootware version - current bootware version of the gateway connected.
- MAC address - Ethernet interface MAC address of the gateway connected.
- CPU serial number - GSM gateway serial number in the format M202-xxxxxxxxxx
- Active: licensed protocols:
 - SIP - SIP support;
 - MEx - Mobility Extension support, 'x' gives the maximum count of users;
 - G729 - G.729ab voice codec support;
 - TUN - GSM-CSD remote supervision support.
- Gateway limitation - gateway operation time (licence limitation if any).
- Licence status - current licence status (unblocked/blocked).



Caution

- The licensed protocols will be blocked when the licence code has expired!
- Networks - list of allowed/barred GSM/UMTS networks.



Tip

- Upon the dealer's request, the gateway may contain blocking of certain GSM/UMTS networks. This state is indicated by a red shining Ch 1 / Ch 2 LED. The GSM module diagnostic window displays the 'netw-err' status.
- Contact your dealer for more information please.

- Licence key for gateway - item for entering a new gateway connecting licence.



Caution

- By entering a new licence code you restart the GSM gateway and discontinue all current calls!

Date / Time

The Date / Time window enables you to set the current date and time for the gateway. Select the **Synchronise with local PC** item and the **Time** and **Date** items will be set automatically according to your PC data.



Caution

- The internal back-up source is able to back up the internal clock source for a few hours only! Make sure that the gateway date and time values are correct after a long disconnection from the power supply!

Voice messages

This window is used for recording, checking and downloading voice messages.

LOG file

The LOG file window helps read out the gateway LOG file. The bottom part of the window includes icons for saving the LOG file into a file and refreshing the LOG listing in the web window.

```

date      time      event      text
-----
** 5.01.00/19:01:23 POWER      [Warm boot]
** 5.01.00/18:40:17 POWER      [Warm boot]
** 2.01.00/19:11:26 POWER      [Warm boot]
** 2.01.00/01:12:27 POWER      [Warm boot]
** 2.01.00/01:12:19 BRDRES     SYSTEM RESET CMD
** 2.01.00/01:10:03 POWER      [Warm boot]
** 1.01.00/00:00:00 POWER      [Warm boot]
** 1.01.00/00:00:00 INIT       Clock has been lost

```

Refer to Subs. 4.3, p. 74 for more details.

CDR file

The CDR file window helps read out the Call Data Records (CDR) of the gateway. The bottom part of the window includes icons for saving the CDR into a file and refreshing the CDR listing in the web window. Refer to Subs. 4.4, p. 76 for more details on the CDR format.



Caution

- The maximum capacity is 962 call records. When this limit is reached, the oldest record(s) will be deleted automatically!

Module status

This window displays the current status of each GSM/UMTS channel. Refer to Subs. 4.5, p. 77 for status details.

Module control

This window helps you control the selected GSM/UMTS module manually.

Statistics

The window displays the current statistics on calls. The bottom part of the window includes icons for saving the LOG file into a file and refreshing the CDR listing in the web window. Refer to Subs. 4.6, p. 80 for format information.

Current call info

The window displays the currently made calls. The bottom part of the window includes icons for saving the LOG file into a file and refreshing the listing in the web window.

Connection state

The window displays the states of all available configuration sessions. The bottom part of the window includes icons for saving the LOG file into a file and refreshing the listing in the web window.

AutoCLIP routing table

The window displays the current state of the AutoCLIP table. The bottom part of the window includes icons for saving the LOG file into a file and refreshing the listing in the web window.

SIP registration

The window displays the current SIP registration state of the gateway.

Online report

The window displays on-line gateway tracing.

Gateway Configuration

System parameters

General

- Saving call data (CDR) - select the call types on which records are to be saved into the CDR file.
- Gateway ID - identifies 2N[®] VoiceBlue Next numerically in the CDR in case multiple devices generate the CDR in the network.

Summer / winter time

- Automatically switch to summer/winter time - enable an automatic change of the gateway system time at the time of transition to/from the daylight saving time.
- Date of switch to winter time [dd.mm] - transition day and month.
- Date of switch to summer time [dd.mm] - transition day and month.

Mobility Extension (DTMF settings)

- Start dialling (quick call forwarding) - DTMF code for quick forwarding start.
- End dialling (quick call forwarding) - DTMF code for quick forwarding end.
- Hold call - DTMF code for active call holding.
- Hang up call - DTMF code for call termination.
- Follow me activation - activation of the **Follow me** function. The GSM gateway starts routing call to the defined GSM/UMTS subscriber number. The default value is *55.
- Follow me deactivation - deactivation of the **Follow me** function. The default value is #55.
- SMS at no answer activation - activation of the **SMS at no answer** function for a registered user. The default value is *33.
- SMS at no answer deactivation - deactivation of the **SMS at no answer** function for a registered user. The default value is #33.

**Tip**

- The **SMS at no answer** and **Follow me** functions can be enabled/disabled using the above mentioned DTMF codes by calling the GSM gateway from a registered mobile user phone. The values of these functions can be changed using the configuration interface too (see below).

Others

- PIN - PIN code for the SIM cards that request the PIN code.

**Caution**

- A SIM card with a PIN code other than that set in the GSM gateway configuration will be blocked with the 'pin-err' cause. To unblock the so-rejected SIM card, enter the correct PIN on your mobile phone!

- End of dialling (empty=off) - a selectable DTMF code for DTMF dialling end in the event of a DISA incoming call. The default value is '#'.

VoIP parameters**VoIP functions**

- Day of deleting statistics on VoIP (every month) - the day of automatic deletion of call statistics on the VoIP interface. None = no deletion.

SIP protocol settings

- Use CLIP from INVITE field - the CLIP as set in the **Contact** or **From** field will be used for routing calls into GSM/UMTS networks.
- Send 180 ringing instead of 183 session progress.
- Send 200 OK instead of 180/183.
- Send 200 OK and BYE when rejected from GSM.

- Send 200 OK on REGISTER request – virtual registration of the device in 2N[®] VoiceBlue Next (necessary for registration-requiring equipment).
- Replace CLIP from GSM with Caller ID.
- Deny DTMF according to RFC2833.
- Forward DTMF for ME (Mobility Extension).

SIP registration

- Registration expires [s] - the timeout after which the 2N[®] VoiceBlue Next registration data expire at the SIP Proxy.
- Reattempt registration [s] - time interval for re-sending the request.
- Registration domain (realm).
- Caller ID.
- Username - registration data for the SIP Proxy.
- Password - registration data for the SIP Proxy.

Voice parameters

- First RTP port (even: 1024 – 65524) - number of the first RTP port. The number must be even as recommended.
- Last RTP port (even: first RTP+10 – 65534) - number of the last RTP port. The number must be even as recommended. The recommended minimum range of RTP ports should be 10.

Codec settings – detailed codec settings (G.711a/u, or G.729).

Codec priority – preferential speech codec setting:

- Priority 1
- Priority 2
- Priority 3

IP addresses

- SIP Proxy (IP->GSM) - IP address of the SIP Proxy from which 2N[®] VoiceBlue Next awaits the GSM outgoing call requirements.



Tip

- In case you keep the default values (0.0.0.0), 2N[®] VoiceBlue Next will receive requests from any IP address.

- SIP Proxy (GSM->IP) - IP address of the SIP Proxy to which 2N[®] VoiceBlue Next turns in the case of a GSM incoming call.
- SIP registrar - IP address of the SIP registration server.
- NAT firewall - IP address for the NAT firewall.
- STUN server - IP address of the STUN (Simple Traversal of UDP through NATs (Network Address Translation)) server for obtaining the public IP address under which 2N[®] VoiceBlue Next operates in the Internet network. You are advised to fill in this field if 2N[®] VoiceBlue Next operates in a private network separated from the Internet using the NAT or firewall. The default port for sending requests to STUN is 3478.

- Next STUN request (60-6553, 0=off) [s] – used for refreshing information on the public IP address of 2N[®] VoiceBlue Next. By editing this item you can configure the frequency of queries sent to the STUN server.



Note

- In case the GSM gateway is located behind the NAT, make sure that the NAT router routing settings for the appropriate ports (SIP, RTP, STUN) are made. The integrated firewalls may affect VoIP calls too!



Tip

- Should there occur call errors (one-way audibility, connection errors, e.g.), check the settings of all active elements on the VoIP call route. To detect the problems quickly, you can test the Point-to-Point connection with a software IP phone (SJ phone, e.g.) in your PC and use tracing by means of a network analyser (WireShark – www.wireshark.org e.g.) at the same time.
- Refer to Subs. 4.2, p. 69 for easy tracing through 2N[®] VoiceBlue Next.

Tones generated to VoIP

- Ring tone to VoIP – generate a ringing tone of your own, or transmit a real ringing tone from the GSM/UMTS networks.

GSM basic parameters

Count of digits dialled from VoIP

- Minimum digits from VoIP - minimum count of digits to be dialled into GSM.
- Maximum digits from VoIP: maximum count of digits to be dialled into GSM.
- Wait for next digit [s] - timeout during which 2N[®] VoiceBlue Next awaits further digits dialled from VoIP to GSM.

Calls

- Relax timeout [s] - time interval between the end of the last call and the beginning of the next call via one and the same GSM module (all incoming and outgoing calls are rejected during this timeout). The recommended value is 2 seconds. Do not change this setting unless absolutely necessary.

Bank holiday list

A list of dates to which the weekend routing mode should be applied in the LCR table.

DTMF settings

The minimum delay between two identical DTMF characters received [s/100].

Tone detector settings

The GSM gateway can automatically detect user defined tones sent by the GSM/UMTS network during call setup. In general, user defined tones are tones of the number to be transmitted. Having detected such tone, the GSM gateway terminates

the call automatically and attempts to set it up through the next available outgoing group (as defined in the LCR table).

- Frequency 1;2;3;4 – defined frequency of the tone to be detected.
- Sequence list – sequence of the above defined tones for detection.

Voice parameters of GSM modules

Here you can set the voice level for the GSM modules in the GSM gateway.

Audio level DSP

Here you can set the voice level for calls in the signal processor of the GSM gateway.



Caution

- An excessively high volume may deteriorate the voice quality (distortion, echo, etc.) and wrong DTMF detection!

Tone generated for incoming calls from GSM/UMTS

- Dialtone - the dialtone type for GSM/UMTS incoming calls.
- Ring tone - the ringing tone type for GSM/UMTS incoming calls.
- Generate busy tone to GSM/UMTS - generation of the busy tone for call end.



Caution

- If the **Generate busy tone** function is enabled, the length of the outgoing calls billed by the GSM/UMTS operator increases!

Error GSM/UMTS causes

- Here you can set the ISDN release cause for the states mentioned below. The call that meets the below mentioned requirements will be rejected with a user-defined cause (the ISDN cause number will be transformed into a SIP code for VoIP according to the table shown below).
 - Lack of digits in OVERLAP mode – the call will be rejected that fails to meet the minimum digits requirement.
 - Restricted number prefix – the call will be rejected whose prefix has not been found in any of the prefix lists.
 - Selected module / GSM group is not ready – the call will be rejected in case no GSM module is available in the LCR-selected GSM outgoing group.
 - Selected module / GSM groups are not ready – the call will be rejected in case no GSM module is available in the LCR-selected GSM outgoing groups.

Cause translation

Here you can convert the release cause received from GSM/UMTS into another ISDN release cause. The resultant ISN cause number will be transformed into a VoIP SIP code as included in the table below:

Conversion table:

ISDN cause value	Description	SIP code	Description
1	Unallocated number	410	Gone
3	No route to destination	404	Not found
6	Channel unacceptable	503	Service unavailable
16	Normal call clearing	BYE	
17	User busy	486	Busy here
18	No user responding	480	Temporarily unavailable
19	No answer from user	480	Temporarily unavailable
21	Call rejected	603	Decline
22	Number changed	410	Gone
27	Destination out of order	404	Not found
28	Address incomplete	484	Address incomplete
29	Facility rejected	501	Not implemented
31	Normal, unspecified	BYE	
34	No circuit available	503	Service unavailable
38	Network out of order	503	Service unavailable
41	Temporary failure	503	Service unavailable
42	Switching equipment congestion	503	Service unavailable
44	Requested facility not subscribed	503	Service unavailable
47	Resource unavailable	503	Service unavailable
50	Requested facility not subscribed	503	Service unavailable
55	Incoming class barred within CVG	603	Decline
57	Bearer capability not authorised	501	Not implemented
58	Bearer cap, unavailable at present	501	Not implemented
63	Service or option unavailable	503	Service unavailable
65	Bearer cap, not implemented	501	Not implemented
79	Service or option not implemented	501	Not implemented
87	User not member of CVG	603	Decline
88	Incompatible destination	400	Bad request
98	Invalid message	400	Bad request
102	Recover on timer expiry	408	Request timeout
XXX	The other received CAU from netw.	500	Internal server error

Others

- Text of SMS at no answer – type the text of the SMS to be sent to the called subscriber in the event of no answer (+ the function is active). The %N string inserts the CLIP received from VoIP into the SMS.
- Text of SMS for all calls - fill in this parameter to make the GSM gateway send an SMS message to every called subscriber regardless of whether or not the call was connected. The %N string inserts the CLIP received from VoIP into the SMS.
- Save received SMS to - select the storage for SMS received.
- SIM card identification – select the SIM IMSI/SCID for CDRs.
- Disable CLIP from GSM/UMTS to VoIP - enable/disable resending the CLIP from GSM to VoIP.
- Reject call with CHLD – reject incoming GSM/UMTS calls by means of AT+CHLD (user busy) instead of standard ATH.

GSM group assignment

You can assign the GSM/UMTS modules to groups separately for incoming and outgoing calls. See the two items below for outgoing and incoming group settings.

GSM outgoing groups

2N[®] VoiceBlue Next allows you to work with two groups of outgoing calls for each of which you can set variable connection set-up modes and count of used minutes and sent SMS messages for a selected period.

General settings

- Delay for CONNECT [s] - define a delay before sending information on the connected call after receipt from GSM.
- Minimum ring duration to send SMS at no answer [s] - set the minimum ringing time for an outgoing call to GSM/UMTS before the SMS at no answer is sent.



Note

- The **SMS at no answer** function works properly only if the INVITE message contains the called and caller numbers.
- Delay for ALERTING [a] - define a delay before sending information on ringing start.
- Minute parameter - select whether or not the GSM gateway should record the call length or count for outgoing call restriction.
- Day of deleting statistics in group (every month) - define a day on which statistics on disconnected calls should be deleted.
- Generate virtual ring tone - enable/disable generation of the virtual ringing tone to the VoIP interface.
- Call length counting: select whether the call should be counted in seconds or minutes.

- BTS lock – identify the BTS to which the GSM modules should be logged fixedly. Restart the selected GSM modules to execute the changes.



Caution

- The BTS lock service works with specific GSM modules only (Q55)!
- An error in BTS identification results in a GSM module login failure.

- After call relax delay – interval between the current call termination and next call setup via the same GSM/UMTS module. 2 seconds is recommended for high-traffic installations.

Disconnect call

Specify the reasons for an immediate disconnection of an outgoing GSM/UMTS call.

Send CLIP from VoIP to GSM/UMTS

- Transfer CLIP to GSM/UMTS - enable/disable the function.
- Separating char - the CDN / CLIP separating character.
- Modify ('-' removes one digit) - you can change the CLIP. The '-' character is used for deleting one char from the left.



Caution

- The **Send CLIP from VoIP to GSM** service must be supported by the GSM/UMTS provider. If not, the provider's network may reject the call!

Basic settings

- Roaming enabled for network code - set the international network identifier for roaming purposes consisting of the following two codes:
 - MCC – Mobile Country Code – country code (Czech Republic - 230);
 - MNC – Mobile Network Code – GSM code (T-Mobile - 01, 0202, Vodafone - 03).

Hence, the international identification code for T-Mobile CZ is 23001. Leave this field empty to disable roaming.

String	Note
<empty>	Roaming is disabled
2300	Roaming is disabled (5 digits is the minimum count)
23002	Roaming is enabled for networks with MCC+MNC code 23002
230XX	Roaming is enabled for networks with MCC+MNC codes 23000 – 23099
XX001	Roaming is enabled for networks with MCC+MNC codes 00001 – 99001
XXXXX	Roaming is enabled for any network



Note

- Check the GSM/UMTS searching priorities on the SIM card using your mobile phone before enabling roaming.



Caution

- Calls via a roaming network may increase your telephone bill!

- CLIR – fill in this parameter to define whether or not the called subscriber should be displayed the calling SIM card telephone number. It is recommended that the telephone number of the SIM card inserted in the GSM module should not be displayed to the called subscriber to avoid problems with CallBack from GSM.



Caution

- The **Temporary CLIP** and **Temporary CLIR** enable services must be supported by the GSM/UMTS provider. If not, the provider's network may reject the call!

- Maximum count of called minutes - set the maximum count of minutes to be used via the SIM card per month.
- Count of SMS messages - set the maximum count of SMS messages to be sent via the SIM card per month.
- Day to restore call limit and delete statistics – set the day in a month on which the statistics of the **Maximum count of called minutes** and **Count of SMS messages** parameters should be deleted.
- First count – set the length of the first pulse after which the pulse counting will be changed as set in the **Next count** parameter.
- Next count – set the length of one pulse in seconds after the time as defined in the **First count** parameter elapses.



Note

- A correct setting of the **First count** and **Next count** parameters guarantees a correct counting of remaining minutes on SIM cards. These parameters help limit outgoing calls according to free minutes. The CDR includes real data.

- Day limit of called minutes – set the maximum count of minutes to be called via the SIM card per day.

Time limits

Define the SIM card use time limits for the GSM group.

Call tariffs – use this function to assign up to four independent free minute counters to each GSM module (SIM card) group:

Tariff 1 = free minutes for calls to own GSM/UMTS network;

Tariff 2 = free minutes for calls to other GSM/UMTS networks;

Tariff 3 = free minutes for calls to the PSTN;

Tariff 4 = free minutes for calls within a closed user group (VPN).

Set the LCR table (assign prefixes to tariffs) correctly to ensure full functionality of this feature. If routing to a specific tariff is not applied in the LCR table, global free minutes will be used.

- **Free minutes**
Count of free minutes for a specific tariff offered by the provider.
- **Transferred minutes**
Maximum count of unused free minutes to be transferred to the next period.
- **Day of restoring free minutes**
Day on which the free minute counters are to be reset automatically. Choose every 24 hours, a day in a month, or a day in a week for restoring.
- **Week of restoring free minutes in month**
Define the week in which the free minute counters are to be reset automatically. This setting is useful when counter reset takes place on 'every other Friday in month'. Otherwise, leave the 'every' value.



Caution

- We recommend you to set the free minute counter value to X-5, where X is the count of free minutes obtained from the GSM/UMTS provider to avoid limit excesses.
- The manufacturer is not liable for any additional call costs in case the GSM/UMTS provider's free minute/SMS limits are exceeded.

GSM incoming groups

2N[®] VoiceBlue Next allows you to work with two groups of incoming calls for each of which you can set variable connection set-up modes.

General settings

- Mode – set how the gateway should process incoming GSM calls:
 - Reject incoming calls – all incoming GSM calls are automatically rejected.
 - Ignore incoming calls – all incoming GSM calls are ignored. The calling subscriber gets the check ringing tone.
 - Accept incoming calls + voice message – incoming GSM calls are received and, if preset so, the DTMF dial-in with a voice welcome note is activated.
 - Accept incoming calls + dialtone – incoming GSM calls are received and, if preset so, the DTMF dial-in function with a simulated secondary dialtone is activated.
 - Callback after ring / Reject – in case the Callback table includes the CLIP, a Callback is made. CLIP-less incoming calls are rejected.
 - Callback after ring / Ignore – in case the Callback table includes the CLIP, a Callback is made. CLIP-less incoming calls are ignored.

- Report to PC + voice message – the GSM gateway sends information on incoming calls to a PC equipped with the call routing software. The DTMF dial-in with a voice welcome note can be activated for incoming calls.
- Report to PC + dialtone – the GSM gateway sends information on incoming calls to a PC equipped with the call routing software. The DTMF dial-in with a simulated secondary dialtone can be activated for incoming calls.
- Minimum digits in DTMF – set the minimum count of digits to be required by the gateway for DTMF dial-in.
- Maximum digits in DTMF - set the minimum count of digits to be accepted by the gateway for DTMF dial-in.
- DTMF dialling timeout [s] – set the time for the GSM gateway to wait for the first / next DTMF digits. If you set this parameter to 0, the incoming call is automatically connected to the numbers included in the **List of called numbers**.
- Day of deleting GSM incl. group statistics - define a day in a month on which the statistics on incoming calls should be deleted.
- Prefix before DISA dial-in – enter a numerical prefix to be automatically inserted before the DTMF dial-in.
- CLIP – use this parameter to modify the CLIP from GSM/UMTS networks. '+' is removed automatically from international identifiers. Use '-' to remove a digit. Examples (GSM CLIP +420600123456):

Parameter	CLIP to VoIP/PRI 1	Note
Null	420261301500	No CLIP change
+	+420261301500	+ inserted before CLIP received
00	00420261301500	00 inserted before CLIP received
--	0261301500	First two digits removed from CLIP received
---99	99261301500	First three digits removed from CLIP received, prefix '99' added

- Looping of voice message – set the voice message playing time.

Send CLIP from GSM/UMTS to VoIP

- Transfer CLIP from GSM/UMTS – enable/disable the function.
- Separating char – enter the character to separate the calling SIM card CLIP and ID extension to be called.
- Modify – modify the ID extension.



Caution

- The **Send CLIP from VoIP to GSM** service must be supported by the GSM/UMTS provider. If not, not, the provider's network may reject the call!

Others

- Time to keep CLIP in table – set the time for which records are to be kept in the AutoCLIP routing table.
- Add record only for unconnected call – unconnected outgoing calls are stored in the AutoCLIP table only.
- Delete record for connected answer – if the CallBack is successful, the corresponding AutoCLIP record will be deleted.
- Skip DTMF for numbers not in CLIP Routing table – enable this function to define that only the incoming calls whose CLIPs are stored in the CLIP Routing table will be able to use DTMF dial-in.
- Skip list of called numbers after failed call to wanted number - enable this function to define that the incoming call will not be forwarded to the number(s) included in the List of called numbers in case the call is rejected after the preceding DTMF dial-in.
- Auto end to CallBack request – any incoming call whose CLIP matches the CallBack setting will be rejected and all the other incoming calls will be ignored. In either case, the CallBack function will be invoked after the incoming call ends.

List of called numbers

List of dialled numbers if DTMF dial-in was not used.

Prefixes

The window helps you adapt the gateway to calling to variable GSM networks. You can set the prefix-based call routing rules here and identify up to eight different groups for routing.

Prefix list 1-8

Eight prefix groups to be assigned in the LCR table.

Basic settings

- GSM network ID – name the prefix list for convenience.
- Default count of digits – the default length of the number to be dialled into GSM/UMTS when routing via the selected prefix list. Use this parameter if the **Digits count** parameter is not included in the **Accepted prefixes** table.

Table of replaced prefixes

This table helps you change the prefix of the number received (from 00 to +, e.g.). You can just add or remove a prefix using this table. This change is performed before the prefix table search is initiated. Keep the „/ „ record at least in the table for a proper function.

Table of accepted prefixes

A list of prefixes of called destinations to which the selected prefix list applies.

LCR table

The LCR (Least Cost Routing) table helps route calls according to the called number and depending on the day time and weekday.

- Prefix list – select a list of prefixes to be used for the selected LCR row.
- Time limitation – set a time limitation for a particular LCR row.
- Weekend usage – enable/disable a particular PCR row during weekends.
- Maximum call length – set the maximum length (in minutes) for an active outgoing call to GSM/UMTS.
- Groups – set the GSM outgoing groups to be used for the selected LCR row.
- Tariffs – select the tariff group (free minute counter) to be used for the outgoing call. Refer to the **GSM outgoing groups** for more details.
- Ignore tone detection in last group – having detected a user defined tone (refer to **GSM basic settings**), the GSM gateway terminates the call and seeks for another call setup option by default. If this parameter is activated, the GSM gateway ignores the tone detection results and sets up the call if this is the last call setup option.



Note

- You are recommended to read the **Routing Algorithm for Outgoing Calls** section on p. 41 before setting the LCR table and prefix lists.
- Remember to set the tariffs correctly in the **GSM outgoing groups** section to make tariff routing work properly.

CLIP routing table + CallBack

The table permanently assigns CLIPs to the extensions to which incoming calls are to be routed automatically and set the CLIP list for the GMS network for which the CallBack function is enabled.

- GSM number (CLIP) – user identification in a GSM/UMTS network.
- AutoDial – enable/disable CLIP routing for the selected CLIP.
- Dial to VoIP – enter the VoIP destination number for CLIP routing.
- Auto CallBack – enable/disable CallBack for the selected CLIP.
- Limit – set the maximum call length (in minutes).



Note

- Remember to activate the CallBack mode in the **GSM incoming groups** window for a proper CallBack function.

Mobility Extension

The table registers the Mobility Extension users.

- Name – enter the user name for calling to VoIP.
- User – enter the registration user name for VoIP.
- Password – enter the registration user password for VoIP.

- GSM number (CLIP) – enter the user SIM card CLIP.
- Follow me function – enable/disable call forwarding to a mobile user station (based on CLIP).
- SMS at no answer function – enable/disable sending of information SMS on missed calls.



Note

- You are recommended to read the Mobility Extension section on page 39 carefully before using the Mobility Extension function.

Ethernet configuration

This window helps you configure the Ethernet interface of your gateway.

- Use DHCP – enable/disable the DHCP client function in 2N[®] VoiceBlue Next.
- IP address – the fixed IP address (v4) of the 2N[®] VoiceBlue Next Ethernet interface.
- Subnet mask – the subnet mask for the 2N[®] VoiceBlue Next Ethernet interface.
- Default gateway – The IP gateway IP address (v4) in the Ethernet network.



Caution

- Incorrect settings, e.g. enabling the **DHCP client** service, may result in a denial of access to the 2N[®] VoiceBlue Next configuration. To avoid this, restore the GSM gateway default settings. Refer to Subs. 3.1, p. 36 for details.



Tip

- In case the gateway is in the DHCP client mode, current assignments obtained from the DHCP server are displayed in the **IP address**, **Subnet mask** and **Default gateway** items.

Login configuration

The window helps you set the access password and name for the 2N[®] VoiceBlue Next web interface. Use the same data for Telnet connection too.



Caution

- Remember to **change** the username and password **during** the first gateway configuration to avoid unauthorised access!

Web configuration

Set additional parameters for the gateway web interface.

- Auto logout – set the count of minutes in which the current user should be logged out automatically.

- Enable web session lock – by default, one Admin user may only be connected to the GSM gateway at a moment. If another authorised user tries to log in, the previous session will be aborted automatically. By activating this function you disable such automatic logout and block any further access attempts.
- Simple login form – here you can change the login window graphic lay-out. Upon activation, the GSM gateway login page will have an anonymous appearance. This function is recommended for connecting the gateway to the Internet directly.
- Use SMS user for SMS operations on the web – enable/disable the user authorised for SMS sending/receiving only.
- SMS user name/password – the gateway enables independent connection of a user authorised for SMS receiving/sending only.

Report configuration

This window is used for setting details on automatic tracing generated by the GSM gateway.

Configuration Backup

Configuration download

The window helps you download the current 2N[®] VoiceBlue Next configuration. The file format is **CFG-M202-gateway_serial_number-rrrrmdd-hhmmss.tar**.

Configuration upload

The window helps you upload new configuration settings into 2N[®] VoiceBlue Next configuration. The Ethernet interface and login data remain the same!



Warning

- Be sure to upload the configuration file intended for the selected GSM gateway only to avoid malfunction of the GSM gateway and the necessity to restart the system.

Utils

This section provides extra functions of the GSM gateway. Currently, they include Ethernet interface tracing (**Network trace**), which helps detect gateway installation problems, such as SIP communication debugging. The downloaded file is in the PCAP format, which is, for example, readable by WireShark (<http://www.wireshark.org/>).

Update

In this menu you can store new firmware into the GSM gateway. Select the **VBN-xx.xx.xx.bin** files only. Refer to the Firmware Upgrade subsection on page 27 for more firmware information.



Warning

- Use the **firmware certified** for this gateway type only! Any other firmware type may **damage** 2N[®] VoiceBlue Next **irreversibly!**

After the new firmware file is stored and sent, the GSM gateway is restarted automatically.

Firmware file uploaded successfully.
Gateway is restarting for new firmware run.
Wait for 10 seconds please ...

Restart

This subsection provides information on a forced restart of 2N[®] VoiceBlue Next.

Gateway is restarting.
Wait for 10 seconds please ...

SIM client

This section is displayed for those GSM gateways only that support the 2N[®] SIM Star system connection – remote SIM card function.

4

Terminal

This section describes communication with **2N[®] VoiceBlue Next** using a terminal.

Here is what you can find in this section:

- Terminal-Based Communication
- AT Interface
- LOGs
- CDRs
- Available Status Messages
- Statistics
- Tracing
- External SMS Control

4.1 Terminal-Based Communication

2N[®] VoiceBlue Next allows for communication via the TCP/IP Telnet protocol. The maximum count of active Telnet sessions is ten. If there are more Telnet connection requests than ten, the GSM gateway rejects the connection.

Terminal

2N[®] VoiceBlue Next acts as an ANSI terminal with echo. Text commands are entered in one of the following formats: AT[command]<CR>, or AT[command]<CR><LF>. The answer consists of up to several rows, an empty row with <CR><LF> and the reply type: OK, ERROR, or BUSY. Use A/<CR> to repeat the command.

The gateway requests a password by displaying the **Login:** and **Password:** prompts. It uses an extended set of AT commands for configuration. Refer to Subs.4.2 page 69 for the list of terminal AT commands.

Example of a login window:

```
[ VoiceBlue Next ] V-01.00.01 B-00.91
Date/time: 15.1.2010/20:56:53.98
SNumber: M202-1501270008
```

```
Login: Admin
Password: **
```

Access Data

2N[®] VoiceBlue Next receives Telnet requests on port 23. Port 23 can be reconfigured.

The access password and name are identical with those of the web interface. The access data cannot be changed from the gateway Telnet interface (only from the web interface) for security reasons.

Refer to Subs. 2.2, p. 19 for access data factory settings.

4.2 AT Interface

2N[®] VoiceBlue Next uses the list of AT commands derived from the standard AT set for configuration and monitoring purposes.

The configuration entering commands start with AT%parameter_id.

The configuration writing out commands start with AT§ion.

The following list of AT commands is universal and some commands may not be included in 2N[®] VoiceBlue Next.

Basic Commands

System Information

ATI3 Firmware version and copyright

ATI4 Factory number

Statistics

AT&T Statistics of calls via PRI interface

AT&TIN Statistics of incoming calls via GSM modules

AT&TOUT Statistics of outgoing calls via GSM modules

AT&T## Statistics of calls via SIM cards of GSM module ##

AT%TPR=mi,ci,mo,co Setting of statistics via PRI

AT%TG0=mi,ci,0,0 Setting of statistics of incoming calls via all GSM modules in GSM group 0

AT%TG#=mi,co,ri,ro Settings of statistics of GSM group #

AT%TGALL=mo.co,ri,ro Settings of statistics of all GSM groups

AT%T##=#,mi,ci,si,mo,co,so Settings of statistics of SIM card # of GSM module ##

AT%T##=ALL,mi,ci,si,mo,co,so Settings of statistics of all SIM cards of GSM module ##

AT%TALL=ALL,mi,ci,si,mo,co,so Settings of statistics of all SIM cards of all GSM modules

Description of parameters:

Mi/mo > Minutes of incom./outg. calls

Ci/co > number of connected incom./outg. calls

Ri/ro > number of re-routed incom/outg. calls in group

Si/so > number of received/sent SMS messages

! When you change these parameters, all the other counters will be reset!!

Wireless Engines

AT&Q## Received GSM signal level (##=00-15)

AT&QALL Received GSM signal level from all GSM modules

AT&Gxx=atcmd Send command for AT commands directly to GSM module

AT&Gxx=at+cnum – SIM card telephone number

AT&Gxx=at+cpin="xxxx" – PIN entering

AT&Gxx=at+clck="sc",1"xxxx" – PIN request enable

AT&Gxx=at+clck="sc",0"xxxx" – PIN request disable

LOG and CDR List

AT&L Log file listing (PRIGW awaits pressing of the Space bar after every 20 lines)

AT&C Call file listing (PRIGW awaits pressing of any key after every 20 lines)

AT&CR Call file listing and deleting (PRIGW awaits pressing of the # key to delete this line /with call info/ from memory and sends next line)

Configuration commands

Status Information

AT&V Overview of all system settings
AT&VI Overview of ISDN PRI settings
AT&V0 Overview of basic GSM settings
AT&V# Overview of GSM group # settings (#=1-8)
AT&VALL Overview of all GSM group settings
AT&N# Overview of parameters of network list # (#=1-8)
AT&NALL Overview of parameters of all network lists
AT&R Overview of LCR lines

Default Reset

AT&FRES Reset with gateway factory settings

System Settings

AT%S70=x.x.x.x IP address
AT%S71=x.x.x.x IP address mask
AT%S81= Initialisation string for setting of mode connected to the gateway COM2
AT%S90=x Type of assignment of B-channels to GSM modules (0-rotating; 1-locked; 2-according to credit)
AT%S91=x,y Way of call information recording (0- no record; 1- successfully connected outgoing call; 2- successfully connected incoming calls; 3- successfully connected incoming and outgoing calls; 5- all outgoing calls; 6- all incoming calls; 7-all incoming+outgoing calls)
 Y = to each call add NET info (1) or no (0)
AT%S93=x Global selection of SIM card (0= according to GSM group, 1-8= number of SIM holder)
AT%S98=xxxx PIN code for SIM cards inserted in the gateway
AT%S99= dd.mm.yy.w/hh:mm:ss Gateway date and time settings
AT%X00=hout,hin,min Automatic logout of GSM modules
 hout ...hour when the modules start to log out randomly
 hin ...hour when the modules start to log in randomly
 min ...minimum number of modules in a group (2..15) that always remain logged-in
AT%X80=name/pass Username/password for access via IP port (this parameter is write only- you cannot see its value)

System Control

AT&BSYS=RESET Reset of PRIGW
AT&Gxx=RESET Reset of GSM module xx
AT&Gxx=BLOCK Block of GSM module xx
AT&Gxx=DOWN Transfer of GSM module into the sleep mode
AT&Gxx=ON Transfer of GSM module into the idle mode

Basic GSM Settings

AT%G00=rr,ggggggg,ggggggg,
ggggggg,ggggggg,ggggggg g,r=Number of GSM group for each GSM module
AT%G01=mode,atms,atfs Voice processing settings (for GM22 GSM modules only)

AT%G02=mode,atms,atfs	mode – algorithm (0-none, 1-semiduplex, 2-fullduplex) atms,atfs – transit, receive gain (3=+5dB, 1=+2.5dB, 0=0dB, 2=-2.5dB, 4=-5dB) Voice processing settings (for TC35 GSM modules only)
AT%G06=mmdd,...mmdd...	mode – algorithm (2-echo canceller) atms,atfs – transit, receive gain (3=+5dBm, 1=+2.5dB, 0=0dB, 2=-2.5dB, 4=-5dB) List of holiday days (mm-month;dd-day), max length of line is 63 chars!
AT%G07=mmdd,...mmdd	Net list of holiday days
AT%G08=delay,min,max,tout	Parameters of dialling from ISDN to GSM delay – relax delay between calls min – minimum length of number dialled from ISDN max – maximum length of number dialled from ISDN tout – delay between dialled digits

GSM Settings (X-GSM Group)

AT%G#0=sim	Mode of switching SIM card sim> 0- OFF – group is turn-off 1-4 – SIM card 1-4 5 – switching by time 6 – switching by random time
AT%G#1=netid,clir,min,sms,sec,sec2,pseudo	Basic parameters of SIM card in slot 1 netid-network number clir – 0=default,1=enabled,2=disabled min – maximum number of minutes called sms – maximum number of SMS sent sec – minimum call length (not for cdr info) sec2 – accuracy of call length measurement (not for cdr info) pseudo – default = 0
AT%G#2=netid,clir,min,sms,sec,sec2,pseudo	Basic parameters of SIM card in slot 2

List of Networks

AT%N#0=op/np,...op/np	List of prefixes replaced by new prefixes (#-number of netlist; op-old prefix;np-new prefix)
AT%N#1=pr/n,...pr/n	List of prefixes dialled into ISDN (to be used for LCR table) pr=prefix n=length of number (parameter /n is optional)
AT%N#2..7=pr/n,...pr/n	Other 7 lists of prefixes dialled into ISDN
AT%N#9=net,max	Net-network number, max-default length of number dialled from ISDN

LCR Table

AT&R	Shows LCR table
AT%R##=net,hh:mm/hh:mm/w*,gr	Settings of line ## (0..63) of LCR table net – number of network list (0..8) hh:mm/hh:mm/w* – line using time limitation gr – GSM group numbers

Test Calls

AT!SGxx=dial	Initiates testing call from AUX interface (xx is the called interface): 00..31 GSM module 32- to GSM via GSM module according to call prefix
AT!WGxx	Connects the following call from interface xx to AUX interface

	00..31 from GSM No.
	32 first incoming calls from GSM
AT!D	Terminates call on AUX interface
Trace	Trace can be activated for only one session at a time
AT!RE	Start tracing of error messages on active interface
AT!Lx	Start tracing of LAN & Telnet on layer x x=2 – Layers IP,TCP,Telnet x=3 – Layers TCP, Telnet x=4 – Layer Telnet
AT!Rx	Start tracing of ISDN PRI & GSM on layer x x=1 – Layers 1,2,3,4 x=2 – Layers 2,3,4 x=3 – Layers 3,4 x=4 – Layer 4
AT!RR	Start tracing (AT!R2) to COM1 interface
AT!RX	Stop tracing (AT!R2) to COM1 interface
SMS Control	SMS control can be activated for only one session at a time
AT!G=#	A6 – activate control via used session 55 – deactivate control via used session 99 – deactivate control on all sessions
AT^MS=ch	Module status ch=0 – 31
*module: ch,sim,sts3,sts2,phs2,type	Response to AT^MS: ch – number of wireless engine sim – number of currently used SIM: 0-none, 1-8-holder 1-8 sts3 – status of layer 3 sts2 – status of layer 2 phs2 – substatus of layer 2 type – type of wireless engine
AT^MI=ch	Module info ch = 0 -31
*minfo: ch,sim,netid,"oper",new,cnt	Response to AT^MI netid – network ID of active wireless network oper – name of active wireless network new – number of received and saved SMS on SIM card cnt – total number of sent SMS messages according to statistics
*smsinc: ch,ix,sts,mem	SMS message has been received and saved ix – index number of saved SMS (0-250) sts – status of SMS (from +CMGL: ix.sts.len) mem – type of used storage (1,2,3)
*smsrep: ch,ix,sts,mem	SMS status confirmation has been received sts – reserved (0)
*smsout: ch[/id],ref,req	SMS message was sent and not saved to SIM card Ref – reference number of SMS (0-255) – to be used in status confirmation messages ID – third party identification number of SMS
*smspdu: ch,ix,sts,len,pdu,csum	Content of SMS message len – length of SMS message (number of bytes in PDU) PDU – content of message in PDU format csum – checksum of all PDU bytes (2 hexa digits) calculated without carry
*smsdel: ch,ix	SMS message deletion confirmation
*smserr: ch[/id],ix,req,err,cms	Fault command response, or SMS not sent req – required wireless engine or GSM group err – error code (6-busy,40-write,41-read,42-delete,43-list) cms – error cause from wireless engine
*smssel: ch,cnt	SMS storage change confirmation
AT^SX=ch	SMS listing - request for listing of all SMS messages and status

	confirmations saved on SIM card. Possible answers: *smserr (busy,list) or *smsinc (ix=1..255) for each saved SMS or status SMS , end of list or empty SIM card - *smsinc (ix=0).
AT^SR=ch,ix	SMS read - request for reading of an SMS message or SMS status saved on SIM card. Possible answers: *smserr (busy,read) or *smspdu
AT^SD=ch,ix	SMS delete - request for deletion of an SMS message (or SMS status message). Possible answers: *smserr (busy,delete) or *smsdel
AT^SM=ch,len,pdu,chsum	SMS to module - request for sending a message via GSM module 0..31 or via any GSM module (ch=32). Possible answers: *smserr (busy,write) or *smsout
AT^SG=grp[/id],len,pdu,csum	SMS to group - request for sending an SMS message via GSM group 1..8. Possible answers: *smserr (busy,write) or *smsout
AT^SS=ch,mem	Command for changing SMS storage. Mem (1;2;3) = type of SMS storage Siemens: 1=SM, 2=ME, 3=ME Ericsson: 1=SM, 2=ME, 3=ME Wavecom: 1=SM, 2=ME, 3=SR Huawei: 1=SM, 2=SM, 3=SM SierraWir.: 1=SM, 2=ME, 3=SR Motorola: 1=IM, 2=IM, 3=IM

4.3 LOGs

For the current LOG records see the **Gateway / Gateway control – LOG file** section or use the AT&L AT command for Telnet sessions. The following list of LOG statuses is universal and some LOGs may not be included in 2N[®] VoiceBlue Next:

Type	Text	Description
POWER	[Power on]	System switched on
	[Power off]	System switched off
	[Warm boot]	Restart of system, unknown cause
	[Watchdog]	Restart of system by watchdog
	[BKPT code]	CPU error: break code detected
	[Stack error]	CPU error: stack integrity failure
	[Divided by zero]	CPU error: dividing by zero
	[RETI code]	CPU error: illegal using of instruction reti
	[NMI intr]	CPU error: wrong interrupt
	[VOID intr]	CPU error: wrong interrupt
	[Upgrade reset]	Start of upgrade firmware procedure
[Software reset]	Reset by AT commands (at&fres...)	
INIT	Eeprom	Initialisation of eeprom (configuration)
	Flash	Initialisation of flash memory (firmware)
HW-ERR		(##...address of chip, RD...read value WR...expected value)
	Codec ##,RD/WR	Error in initialisation of codec on GSM,AUX board
	COM2 #####,RD/WR	Error in initialisation of COM2 on AUX board
	Duart #####,RD/WR	Error in initialisation of serial controller on GSM board
	Hscx #####,RD/WR	Error in initialisation of HDLC controller on AUX board
	Pri #####,RD/WR	Error in initialisation of PRI controller
SYSEERR	User stack error!	SW error: stack integrity failure
BRDIN	#08 TYP STS	Board inserted (number of gsm board, type, status)
BRDOUT	#08 TYP STS	Board disconnected
BRDRES	#08 TYP STS	Reset the board by AT command
	ALL GSM RESET CMD	Reset all GSM boards by AT command
	SYSTEM RESET CMD	Reset the system by at&bsys command
L1-ERR		(reserved)
L2-ERR		Error of ISDN layer 2 by Q.921
	A: unsol.RX(F)	Received packet RR,RNR,REJ with unexpected bit F=1
	B: unsol.DM(F)	Received packet DM with unexpected bit F=1
	C: unsol.UA(F)	Received packet UA with unexpected bit F=1
	D: unsol.UA(-)	Received packet UA with unexpected bit F=0
	E: unsol.DM(-)	Received packet DM with unexpected bit F=0
	F: peer re-est	Received packet SABME in status OKEST
	G: repeated SABME	Repeated unsuccessful send of packet SABME

	H: repeated DM	Repeated unsuccessful send of packet DM
	I: failed (TIMREC)	Unsuccessful breaking-up of status TIMREC
	J: N(R) error	Received wrong value N(R) – numbering of packets
	K: recv.FRMR	Received packet FRMR (information about error)
	L: undef.frame	Received packet of unknown type
	M: (I field)	Received wrong I-packet (numbered packet)
	N: frame size	Received packet with wrong length
	O: N201 error	Value N201 was exceeded (max length of packet)
L3-ERR	tout sts # (p##)	Error of isdn layer 3: timeout in status # on channel p##
G2-ERR	ATD/ERROR init (g##)	Error of isdn layer 2: restart of module g## after rejected command ATD by GSM network
	GSM Cause 150 (g##)	Error of isdn layer 2: restart of module g## after cause 150 was received (call barred by GSM network)
G3-ERR	tout sts # (g##)	Error of isdn layer 3: timeout in status # on module g##
C4-ERR	tout sts # (p##/g##)	Error of connecting layer 4: timeout in status # on call between channel p## and GSM module g##

4.4 CDR

For the current CDRs see the **Gateway / Gateway control – CDR file** section or use the AT&C / AT&CR AT commands for Telnet sessions.

```
** 31.07.02/11:07:53 O-OK CAU-016 aux/g02 GRP-1 0:23 001:40 00000.00 1 0608218005 45456060 1/8942019636000065750
```

- Column 1: **
- Column 2: date/time of call start
- Column 3: type of call
- Column 4: CAUSE sent to ISDN
- Column 5: number of used B-channel/number of used GSM module
- Column 6: used GSM group (C= CallBack to PRI 1 , E= call via PRI 2 interface)
- Column 7: call set-up time
- Column 8: call duration in mmm:ss (max 255:59) or error cause for unconnected calls
- Column 9: call cost (will be implemented in a higher firmware version)
- Column 10 : gateway id (optional)
- Column 11: called number
- Column 12: calling number
- Column 13: slot number/IMSI* of used SIM card

4.5 Available Status Messages

The following list of statuses is universal and some messages may not be included in 2N® VoiceBlue Next.

GSM Layer Statuses

GSM Layer 2		
Name	Description	What Follows
INIT	GSM module initialisation start	PINREQ
SIMO	Module switch to internal SIM card	INIT
PINREQ	Module PIN request	PINSET
PINSET	PIN value sending to module	INFO
BLOCK	Module blocked temporarily or permanently (see Layer 2 information)	INIT
SET-UP	Module configuration running	IDLE
SLEEP	Module sleep running (transition to BLOCK status)	BLOCK
NWAIT	Awaiting GSM log-in	SET-UP
IDLE	Rest status, can start/receive call, execute AT&G command	CALL/CMD
CALL	Call running (call establishing, connected call, call end)	IDLE
CMD	Communicating with module upon AT&G command	IDLE
INFO	Information loading from module and SIM card	NWAIT

GSM Layer 2 Info for BLOCK	
Name	Description
(block)	Blocked by AT&G command, terminated by module, board or system reset
Netw-reg	GSM log-in refused (not activated SIM), next attempt in 5..60 minutes
Clir-err	CLIR activation request refused, next attempt in 2..10 minutes
Mod-err	Defective or unconnected GSM module, next attempt in 2 minutes
Pin-err	Wrong PIN, permanently in BLOCK status
Sim-err	Defective or non- inserted SIM card, next attempt in 2 minutes
Log-out	Temporarily logged-out according to parameter X00
Puk-req	SIM card requires PUK
(undef)	This position of SIM card was not checked by gateway

GSM Layer 3	
Name	Description
NULL	Rest status, ready for call
CINIT	Request of call to GSM (from Layer 4)
OPROC	Call to GSM is connected
CDELIV	Call to GSM is ringing

CPRES	Indication of call from GSM (from Layer 2)
CRECV	Call from GSM is ringing on ISDN interface
IPROC	Call from GSM is processed by ISDN interface
ACTIVE	Connected call
DISREQ	Disconnection request (to Layer 2)
DISIND	Indication of disconnection (from Layer 2)
RELREQ	Module release for another call (to Layer 2)
OVRECV	Reading of DTMF dialling from GSM (from Layer 2)
RELIND	Indication of module release (from Layer2)

Link Layer Statuses

Layer 4

Name	Description
NULL	Rest status, ready for call
MORE	Call request received from GSM or ISDN, awaiting further dialling or timeout
SET-UP	Call request sent to opposite interface
PROC	Call request confirmed, awaiting call answer
ACTIVE	Connected call
DISC	Call disconnection in progress

Command Shell Statuses

Command Shell

Name	Description
IDLE	Rest status, awaiting AT commands
REQUEST	Communication with GSM module upon AT&G command is displayed
REPORT	Active tracing
LOGFILE	Content of log file is being written out
CALLFILE	Content of call file is being written out
CALLREAD	Call file records are read
AUTOFILE	Content of incoming call auto routing chart is being written out
QUERY	(not used so far)
SCREEN	(not used so far)
MATRIX	Active matrix screensaver
FUNCFILE	Content of debug file is being written out
LCRFILE	(not used so far)

Telnet Layer

Name	Description
LOGOUT	User logged-out
LOGIN	User is entering name
PASSW	User is entering password
IDLE	User logged-in

Records of Events and Calls

Record Type in Log File

Name	Description
POWER	System power on, power off or reset
INIT	Initialisation of EEPROM (configuration) or Flash (upgrade)
HW-ERR	HW error of plugged-in board
SYSERR	System error (memory error, etc.)
G2-ERR	GSM module layer 2 error (gate2)
G3-ERR	GSM module layer 3 error (gate3)
C4-ERR	Link layer error (call4)

Record Type in Call File

Name	Description
I-FD	Unconnected incoming call attempt
I-OK	Connected incoming call
O-FD	Unconnected outgoing call attempt
O-OK	Connected outgoing call

4.6 Statistics

The GSM gateway automatically generates statistic data on all outgoing and incoming calls. These data can be deleted on the user level or through configuration (automatic deletion on a selected day).

Explanation of columns:

- Pri/grp : type of calls
- Reset : date of last reset of the statistics
- Minutes : number of minutes
- Hhhh:mm:ss : same number converted to time
- Calls : number of calls
- SMS : number of sent SMS messages
- Reject: number of unconnected calls (no available GSM module-call rejected with cause 41(42))
- Failed: number of unconnected calls (rejected by GSM network)
- C.off: number of unconnected calls (terminated by calling party)
- Errors: number of unconnected calls (wrong requests - disallowed prefix, etc.)
- Red.in: number of connected calls (rerouted to this GSM group)
- Redout: number of connected calls (rerouted to another GSM group)

[Statistics of calls in groups]

group (reset)	minutes	hhhh:mm:ss	calls	reject	failed	c.off	errors
#1 inc (2.01)	0	0:00:00	0	0	0	0	0
#2 inc (2.01)	0	0:00:00	0	0	0	0	0

group (reset)	minutes	hhhh:mm:ss	calls	reject	failed	red.in	redout
#g1 out (2.01)	0	0:00:00	0	0	0	0	0
#g2 out (2.01)	0	0:00:00	0	0	0	0	0

[Statistics of incoming calls on all modules]

network (reset)	minutes	hhhh:mm:ss	calls	reject	failed	c.off	errors
#vi inc (0.00)	0	0:00:00	0	0	0	0	0
#grpinc (0.00)	0	0:00:00	0	0	0	0	0

group (reset)	minutes	hhhh:mm:ss	calls	reject	failed	c.off	errors
#1 inc (2.01)	0	0:00:00	0	0	0	0	0
#2 inc (2.01)	0	0:00:00	0	0	0	0	0

module (reset)	minutes	hhhh:mm:ss	calls	reject	failed	c.off	smsses
#m0 inc (2.01)	0	0:00:00	0	0	0	0	0
#m1 inc (2.01)	0	0:00:00	0	0	0	0	0

[Statistics of outgoing calls on all modules]

network (reset)	minutes	hhhh:mm:ss	calls	reject	failed	c.off	errors
#vi out (0.00)	0	0:00:00	0	0	0	0	0
#grpout (0.00)	0	0:00:00	0	0	0	0	0

group (reset)	minutes	hhhh:mm:ss	calls	reject	failed	red.in	redout
---------------	---------	------------	-------	--------	--------	--------	--------


```
-----
#g1 out ( 2.01)    0 0:00:00  0  0  0  0  0
#g2 out ( 2.01)    0 0:00:00  0  0  0  0  0

module (reset)  minutes hhhh:mm:ss  calls reject failed c.off  smses
-----
#m0 out ( 2.01)    0 0:00:00  0  0  0  0  0
#m1 out ( 2.01)    0 0:00:00  0  0  0  0  0
```

[Statistics of calls on module #0]

```
sim/dir net/grp  minutes hhhh:mm:ss  calls reject failed c.off  smses
-----
#1 inc  /1      0 0:00:00  0  0  0  0  0
-----
#1 out  /1      0 0:00:00  0  0  0  0  0
```

[Statistics of calls on module #1]

```
sim/dir net/grp  minutes hhhh:mm:ss  calls reject failed c.off  smses
-----
#1 inc  /1      0 0:00:00  0  0  0  0  0
-----
#1 out  /1      0 0:00:00  0  0  0  0  0
```

4.7 Tracing

2N[®] VoiceBlue Next allows for operation tracing (VoIP, SIP, GSM). Tracing is accessible in one session only at a time, the other tracing requests are rejected with BUSY. With regard to a rather extensive volume of data, we recommend that the **Write communication into file** function should be activated before tracing. Any Telnet-supporting terminal (HyperTerminal, Putty, etc.) can be used.



Tip

- You are advised to synchronise your GSM gateway with the SIP Proxy, or a PC before tracing.

AT Command	Description
AT%S92=x	Set the tracing details. Refer to the table below for value X.
AT!R2	Start tracing via the active session.
Any character	Terminate tracing.

Layer 3 and 4 Status Listing	Timestamp Write-Out	SMP Packet Write-Out	Layer 2 Status Listing	LCR Listing
1	2	4	8	16

The resultant value X is a sum of the required functions (X= timestamps+LCR = 16+2 = 18, e.g.).

4.8 External SMS Control

If this function is enabled for the active Telnet session, the GSM gateway automatically sends information on an incoming SMS message. An SMS message can also be sent using special commands.

Command	Description
AT	'basic keep alive' command (answer 'OK')
AT!G=A6	Activation of SMS control (can be activated only in one session at same time)
AT!G=A55	Deactivation of SMS control
AT^MS=ch	GSM module [ch] status
AT^MI=ch	GSM module [ch] info
AT^SX=ch	Request to list all SMS messages and status confirmations saved in the SIM card / GSM module. Possible answers: *smserr(busy,list) or *smsinc (ix=1-255) for each saved SMS or status SMS. End of list or empty storage - *smsinc(ix=0), or *smserr 255
ST^SR=ch,ix	Request to read an SMS message or SMS status saved on the SIM card. Possible answers: *smserr (busy,read) or *smspdu
AT^SD=ch,ix	Request to delete an SMS message (or SMS status message). Possible answers: *smserr (busy,delete) or *smsdel
AT^SM=ch,len,pdu,csum	Request to send a message via GSM module 0..31 or via any GSM module (ch=32). Possible answers: *smserr (busy,write) or *smsout
AT^SG=grp[/id],len,pdu,csum	Request to send an SMS message via GSM outgoing group 1..8. Possible answers: *smserr (busy,write) or *smsout
AT^SS=ch,mem	Command for an SMS storage change. Ch (0-31) = module number. Mem (1;2;3) = SMS storage type

SMS Storages

Siemens / Cinterion:	1=SM, 2=ME, 3=ME
Ericsson:	1=SM, 2=ME, 3=ME
Wavecom:	1=SM, 2=ME, 3=SR
Huawei:	1=SM, 2=SM, 3=SM
SierraWir.:	1=SM, 2=ME, 3=SR
Motorola:	1=IM, 2=IM, 3=IM

(SM = SIM card, ME = module, SR = status report memory, IM = inbox memory)

Information Messages

Message	Description
* smsinc: ch,ix,sts,mem	An SMS message was received and saved into the SMS storage.
* smsrep: ch,ix,sts,mem	An SMS status confirmation was received.
* smsout: ch[/id],ref,req	An SMS message was sent and not saved into the SMS storage.
* smspdu: ch,ix,sts,len,pdu,csum	Content of SMS message or status confirmation.
* smsdel: ch,ix	An SMS message or status confirmation was deleted from position ix.
* smserr: ch[/id],ix,req,err,cms	Response to an error command.
* smsl: ch,cnt	Confirmation of an SMS storage change.

5

Technical Parameters

This section provides the technical parameters of **2N® VoiceBlue Next**.

5.1 Technical Parameters

Two-Channel Version

Dimensions (W x H x D)	170x130x45 mm
Power Supply	
Type	External power adapter (SELF type) 90-230V,50-60Hz to 12V DC 2A Power over Ethernet (PoE 802.3af)
Connector	DC Jack 2.1mm
Power input	Up to 20W
Interface	
Protocols	TCP,UDP,IP,RTP,TELNET,http,DHCP
Connector	1x 10/100BaseT Ethernet
Administration	AT commands, web interface
VoIP	
Signalling	SIP
DTMF	RFC2833
Count of voice channels	2
Voice codecs	G.711 PCM at 64 kbps G.729 Annex AB
PCM companding	A-law/u-Law (optional)
Wireless Interface	
Count of channels	2
Bandwidth	GSM 850/900/1800/1900 MHz UMTS 850/1900/2100 MHz
GSM	Cinterion MC55i, or Wavecom Q55, or Telit UC864-G
Audio	HR/FR/EFR/AMR
USIM/SIM card	Small plug-in 3V
Antenna	One external antenna (integrated antenna splitter) SMA FEMALE connector
Others	
Working temperature	5°C – 45°C
Air humidity	Max 95% at 40°C

Four-Channel Version

Dimensions (W x H x D)	220x45x140 mm
Power Supply	
Type	External power adapter (SELF type) 90-230V,50-60Hz to 12V DC 2A Power over Ethernet (PoE 802.3af)
Connector	DC Jack 2.1mm
Power input	Up to 20W
Interface	
Protocols	TCP,UDP,IP,RTP,TELNET,http,DHCP
Connector	1x 10/100BaseT Ethernet
Administration	AT commands, web interface
VoIP	
Signalling	SIP
DTMF	RFC2833
Count of voice channels	4
Voice codecs	G.711 PCM at 64 kbps G.729 Annex AB
PCM companding	A-law/u-Law (optional)
Wireless Interface	
Count of channels	4
Bandwidth	GSM 850/900/1800/1900 MHz UMTS 850/1900/2100 MHz
GSM	Cinterion MC55i, or Wavecom Q55, or Telit UC864-G
Audio	HR/FR/EFR/AMR
USIM/SIM card	Small plug-in 3V
Antenna	One external antenna (integrated antenna splitter) SMA FEMALE connector
Others	
Working temperature	5°C – 45°C
Air humidity	Max 95% at 40°C

6

Supplementary Information

This section provides supplementary information on **2N[®] VoiceBlue Next**.

- Regulations and Directives
- Troubleshooting
- List of Abbreviations
- General Instructions and Cautions

6.1 Regulations and Directives

2N[®] VoiceBlue Next conforms to the following directives and regulations:

- Directive 1999/5/EC of the European Parliament and of the Council, of 9 March 1999 – on radio equipment and telecommunications terminal equipment and the mutual recognition of their conformity
- Directive 2006/95/EC of the European Parliament and of the Council of 12 December 2006 on the harmonisation of the laws of the Member States relating to electrical equipment designed for use within certain voltage limits
- Directive 2004/108/EC of the European Parliament and of the Council of 15 December 2004 on the approximation of the laws of the Member States relating to electromagnetic compatibility and repealing Directive 89/336/EEC
- Directive 2002/96/EC of the European Parliament and of the Council of 27 January 2003 on waste electrical and electronic equipment
- Regulation (EC) No 1907/2006 of the European Parliament and of the Council of 18 December 2006 concerning the Registration, Evaluation, Authorisation and Restriction of Chemicals (REACH), establishing a European Chemicals Agency, amending Directive 1999/45/EC and repealing Council Regulation (EEC) No 793/93 and Commission Regulation (EC) No 1488/94 as well as Council Directive 76/769/EEC and Commission Directives 91/155/EEC, 93/67/EEC, 93/105/EC and 2000/21/EC
- Directive 2002/95/EC of the European Parliament and of the Council of 27 January 2003 on the restriction of the use of certain hazardous substances in electrical and electronic equipment.

6.2 Troubleshooting



For the most frequently asked questions refer to FAQ.2n.cz.

- ◆ *No LED is shining on 2N[®] VoiceBlue Next.*
 - ◆ 2N[®] VoiceBlue Next is disconnected from the power supply.

- ◆ *2N[®] VoiceBlue Next fails to log in to the GSM network.*
 - ◆ Check the SIM card.
 - ◆ Check the PIN.
 - ◆ Check the antenna connection.
 - ◆ Select a place with a good GSM signal.

- ◆ *2N[®] VoiceBlue Next is not communicating with the PC.*
 - ◆ Check the Ethernet cable connection and the Ethernet interface settings in your PC.

6.3 List of Abbreviations

- **API** (Application Programming Interface)
- **ASR** (Answer Seizure Ratio)
- **BIOS** (Basic Input-Output System)
- **CD** (Compact Disc)
- **CDR** (Call Data Record)
- **CLIR** (Calling Line Identification Restriction)
- **COM** (PC serial interface)
- **CPU** (Central Processor Unit)
- **DHCP** (Dynamic Host Configuration Protocol)
- **DNS** (Domain Name Server)
- **DTMF** (Dual Tone Multifrequency)
- **eCPU** (enhanced CPU)
- **FW** (Firmware)
- **GMT** (Greenwich Mean Time)
- **GSM** (Group Switched Mobile system)
- **GPRS** (General Packet Radio Service)
- **GW** (Gateway)
- **HW** (Hardware)
- **IMEI** (International Mobile Equipment Identity)
- **IMSI** (International Mobile Subscriber Identity)
- **IP** (Internet Protocol)
- **IVR** (Interactive Voice Response)
- **LAN** (Local Area Network)
- **LED** (Light Emitting Diode)
- **NAT** (Network Address Translation)
- **PC** (Personal Computer)
- **PCB** (Printed Circuit Board)
- **PCM** (Pulse-code modulation)
- **PIN** (Personal Identification Number)
- **PRI** (Primary Rate Interface)
- **PUK** (Personal Unblocking Key)
- **SB** (SIM Board)
- **SC** (SIM Client)
- **SIM** (Subscriber Identity Module)

- **SIP** (Session Initiation Protocol)
- **SMS** (Short Message Service)
- **SSH** (Secure Shell)
- **SW** (Software)
- **TCP** (Transmission Control Protocol)
- **UCMD** (UDP commands)
- **UDP** (User Datagram Protocol)
- **UMTS** (Universal Mobile Telecommunication System)
- **UPS** (Uninterruptible Power Supply)
- **USSD** (Unstructured Supplementary Service Data)
- **VoIP** (Voice over Internet Protocol)
- **WAN** (Wide Area Network)

6.4 General Instructions and Cautions

Please read this User Manual carefully before using the product. Follow all instructions and recommendations included herein.

Any use of the product that is in contradiction with the instructions provided herein may result in malfunction, damage or destruction of the product.

The manufacturer shall not be liable and responsible for any damage incurred as a result of a use of the product other than that included herein, namely undue application and disobedience of the recommendations and warnings in contradiction herewith.

Any use or connection of the product other than those included herein shall be considered undue and the manufacturer shall not be liable for any consequences arisen as a result of such misconduct.

Moreover, the manufacturer shall not be liable for any damage or destruction of the product incurred as a result of misplacement, incompetent installation and/or undue operation and use of the product in contradiction herewith.

The manufacturer assumes no responsibility for any malfunction, damage or destruction of the product caused by incompetent replacement of parts or due to the use of reproduction parts or components.

The manufacturer shall not be liable and responsible for any loss or damage incurred as a result of a natural disaster or any other unfavourable natural condition.

The manufacturer shall not be held liable for any damage of the product arising during the shipping thereof.

The manufacturer shall not make any warrant with regard to data loss or damage.

The manufacturer shall not be liable and responsible for any direct or indirect damage incurred as a result of a use of the product in contradiction herewith or a failure of the product due to a use in contradiction herewith.

All applicable legal regulations concerning the product's installation and use as well as provisions of technical standards on electric installations have to be obeyed. The manufacturer shall not be liable and responsible for damage or destruction of the product or damage incurred by the consumer in case the product is used and handled contrary to the said regulations and provisions.

The consumer shall, at its own expense, obtain software protection of the product. The manufacturer shall not be held liable and responsible for any damage incurred as a result of the use of deficient or substandard security software.

The consumer shall, without delay, change the access password for the product after installation. The manufacturer shall not be held liable or responsible for any damage incurred by the consumer in connection with the use of the original password.

The manufacturer also assumes no responsibility for additional costs incurred by the consumer as a result of making calls using a line with an increased tariff.

Electric Waste and Used Battery Pack Handling



Do not place used electric devices and battery packs into municipal waste containers. An undue disposal thereof might impair the environment!

Deliver your expired electric appliances and battery packs removed from them to dedicated dumpsites or containers or give them back to the dealer or manufacturer for environmental-friendly disposal. The dealer or manufacturer shall take the product back free of charge and without requiring another purchase. Make sure that the devices to be disposed of are complete.

Do not throw battery packs into fire. Battery packs may not be taken into parts or short-circuited either.



2N TELEKOMUNIKACE a.s.

Modřanská 621, 143 01 Praha 4, Česká Republika
Tel.: +420 261 301 111, Fax: +420 261 301 999
E-mail: obchod@2n.cz
Web: www.2n.cz

PR1561 v3.0