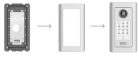


Grandstream GDS37XX-WMK In-Wall Mounting Kit for GDS3710

Grandstream GDS37XX-WMK In-Wall Mounting Kit for GDS3710



Product Name: Grandstream GDS37XX-WMK In-Wall Mounting Kit for GDS3710

Manufacturer: Grandstream

Model Number: GDS37XX-WMK

Grandstream GDS37XX-WMK In-Wall Mounting Kit for GDS3710

The Grandstream GDS37XX-WMK In-Wall Mounting Kit is available for use with the GDS3710 IP Video Door Phone. This mounting kit allows the GDS3710 to be mounted flushed within a wall, rather than on the surface of the wall. It supports solid wall, stud, and drywall (hollow wall) installation. When installing the GDS3710 or the In-Wall Mounting kit, please follow local building and electrical codes. The device is suggested to be installed with the bottom of the device 50-55 inches above the ground.

Grandstream GDS37XX-WMK In-Wall Mounting Kit - Technical Specifications

Box Contents

- 1 1/2" 1 installation bracket
- 1 1/2" 1 cover plate
- 1 1/2" 1 plastic box
- 1 1/2" 1 drill template
- 1 1/2" Quick reference guide
- 1 1/2" 1 metal frame
- 1 1/2" 6 piece anchor and screw set
- 1 1/2" 12 screws (2 different lengths)
- 1 1/2" 12 nuts (two different styles)
- 1 1/2" 6 anti-tamper screws
- 1 1/2" 1 anti-tamper hex key

Required In-Wall Space

1 1/2" 99.8mm (3.93 inches) x 193.88mm (7.63 inches), 35mm deep (1.38 inches)

Price: £41.70